

SPRING 1978

# The Rancher

A PUBLICATION OF THE FLORIDA SHERIFFS YOUTH FUND, BOYS RANCH, FLORIDA 32060.



*Spring is*

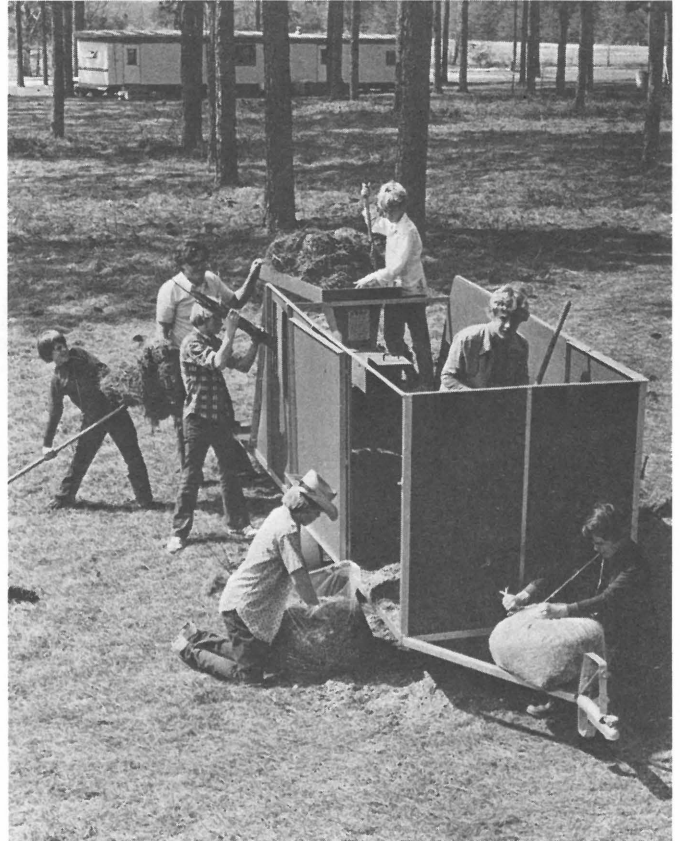
... discovering the turnips we planted last winter didn't produce any turnips — just seed.



# Spring is...

... using a new composting machine built by Boys Ranch staff members to transform sticks and leaves and rotting hay into rich organic fertilizer.

... enjoying a cool drink in the hot sun.



... pushing for a furrow and wishing for a mule.



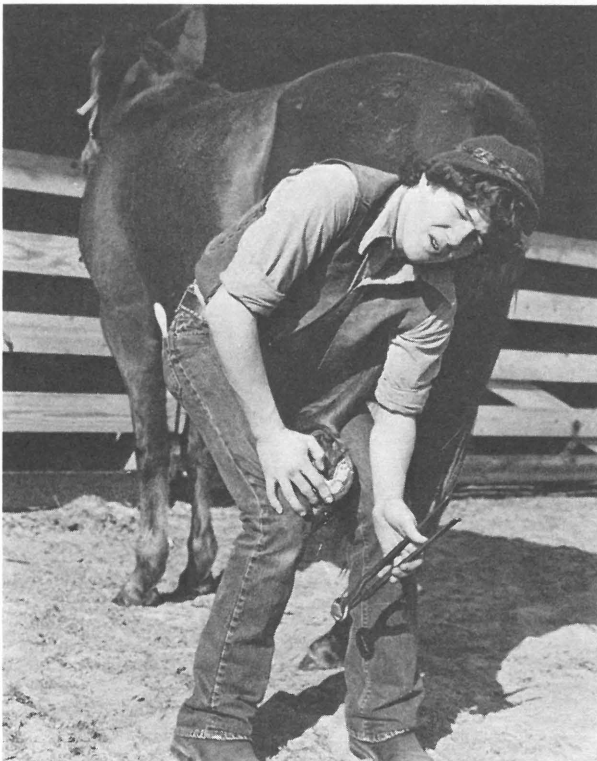
... wondering if that tiny green thing will ever grow into a big cabbage.



... planting pines (in this instance it was for ornamental purposes, but elsewhere on the Ranch we will plant over 200,000 seedlings for commercial purposes this year so that the marketing of pulpwood will continue to be an important source of revenue.)



... trimming hooves ... and Rancher Robert Putnam is an expert. He was recently graduated from a farrier's school.



... making a new friend.



*Spring  
is...*

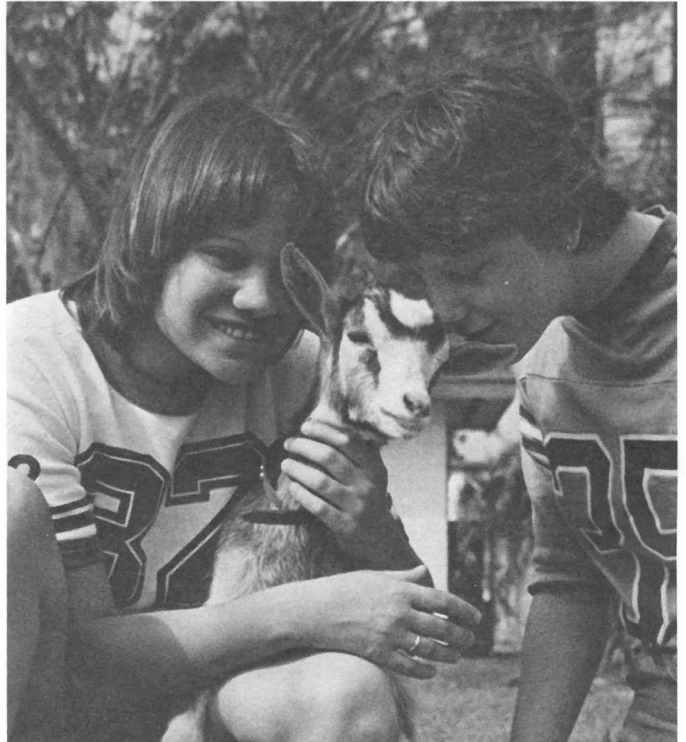
...Cindy Norman, Shelly Hartung and Shelly Grubbs going into "the poultry business" at The Girls Villa.



..... Cindy Norman working on fencing of the "animal farm" at the Girls Villa.



... Shelly Hartung and Cindy Norman adding a goat to their menagerie.







... Margaret Mitchell "baby sitting," which she said was her favorite pastime.



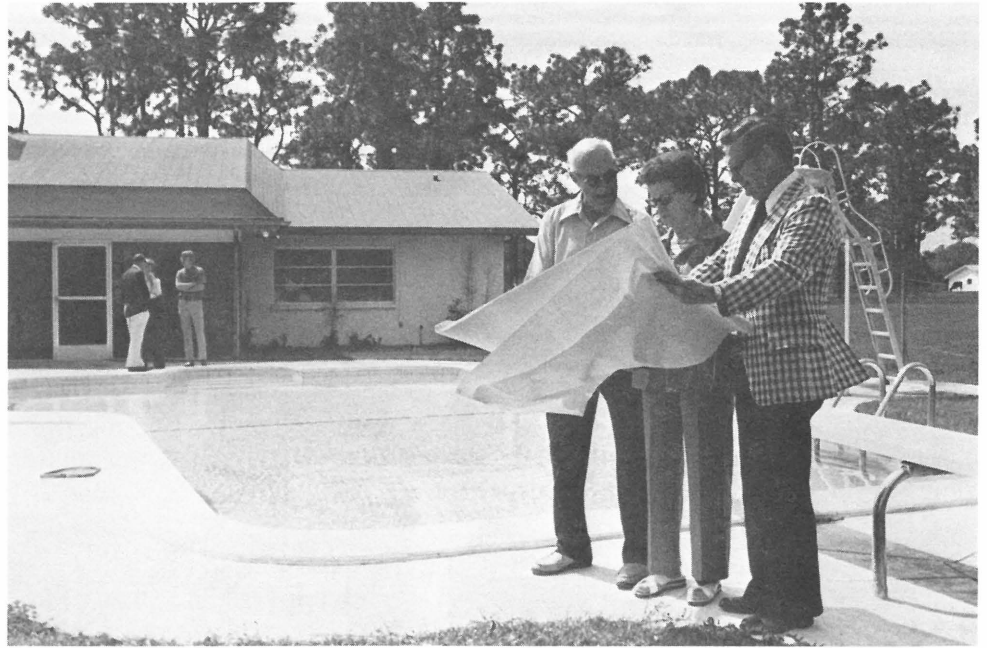
... or Rose Danforth, Debbie Stone and Carol Mayrand painting the new lakeside shelter.



... Velma Malmateen, Carol Mayrand and Jackie Hughes preparing the soil for a vegetable garden.



Mr. and Mrs. D. A. Salls and Joe Spenard (right) discuss renovation plans which will transform the Salls' former residence into the first building at The Florida Sheriffs Youth Ranch. Mr. and Mrs. Salls donated their home, swimming pool and surrounding acreage as a site for The Youth Ranch. Spenard has been hired as the Resident Director of The Youth Ranch.



## New building will speed up development of

# Youth Ranch



Miss Nancy Pilcher, holding her Florida Sheriffs Association Lifetime Honorary Member plaque. Her brother, the late Elmer Ellsworth "Dick" Pilcher, was also a Lifetime Honorary Member.

CLEARWATER — Her handshake carried a message; her smile was warm; and it was immediately obvious Nancy Pilcher was going to be friendly and cordial to her visitors even though one of them was carrying a camera.

Publicity was something she had meticulously avoided throughout her 86 years, and she was not seeking it now, but she had graciously consented to have her picture taken for THE RANCHER, and to talk about a subject that absorbs her interest: The Elmer and Nancy Pilcher Administration Building which will soon be under construction at The Florida Sheriffs Youth Ranch.

While Miss Pilcher was talking to Don Genung, Florida Sheriffs Youth Fund Vice President for Planned Giving, and Joe Spenard, Resident Director of The Youth Ranch, the photographer moved around the room snapping pictures from various angles.

Despite this distraction, the conversation threaded its way through a number of subjects before targeting on the handsome new administration building, which will be the first major construction project at the Youth Ranch, and will be financed by substantial gifts from Miss Pilcher and her brother, the late Elmer Ellsworth "Dick" Pilcher.

If these gifts had not materialized when they did, the building plans would still be on the architect's drawing board gathering dust, and Youth Ranch officials would still be waiting for an answer to their hopes and prayers.

The answer came, and when it did, another question was raised: How did the Pilchers, who have given generously to many charities, happen to select The Youth Ranch as a major target of their generosity?

Assuming they never would have heard about The Youth Ranch if they hadn't decided to make Florida their home, it seems correct to say the selection process began in 1951 when they moved from Lexington, Kentucky, to Clearwater, Florida.

There were, of course, other factors involved in their decision.

Elmer was a successful stock market investor; Nancy had worked for The Internal Revenue Service for 33 years; and they could afford to give substantial charitable gifts.

Neither had married. They had not been involved in raising children. They had no living close relatives, and it was easy for them to understand the aloneness experienced by needy and neglected youngsters.

They also knew the importance of keeping family ties close and secure. Throughout their lives they had depended on each other and helped each other.

They were in the habit of helping others too, and in 1970, after newspaper articles made them aware of the outstanding child care work being done by The Florida Sheriffs Youth Fund, they became faithful supporters of two Youth Fund projects: The Florida Sheriffs Boys Ranch and Girls Villa.

In 1976, when The Florida Sheriffs Youth Ranch was founded as a third project of The Youth Fund, it had a special appeal for them because it was designed to provide a home for needy brothers and sisters — to eliminate the necessity of brothers and sisters living in separate institutions.

The Pilchers' own experience had shown them how important family ties could be — how important it was for brothers and sisters to help each other. They could readily identify with the philosophy behind The Youth Ranch, and it was a natural consequence that they decided to add it to their list of favorite charities.

Almost at the same time tragedy intervened in their lives. Elmer developed a terminal illness, and in December, 1976, when it became obvious he did not have long to live, he and Nancy discussed his will.

He wanted to leave his entire estate to her, but she insisted she didn't need it. "I told him it would just increase my income tax," she said. "I didn't see any sense in taking it."

Instead, she urged her brother to donate the money to charity. Three weeks before his death he agreed.

"We did it overnight," she said, recalling how they selected charities to receive the money. "We had to. We knew he wasn't going to live but a few weeks. It was a hard decision because there are so many who need help."

The estate was finally divided among seven groups. The Florida Sheriffs Youth Fund was designated to receive \$110,000 for the benefit of The Youth Ranch; The Shriners' Crippled Children's Hospital, in Lexington, Kentucky, was selected to receive an identical amount; and The Florida Gulf Coast Symphony, Morton Plant Hospital, The Salvation Army, The Florida Gulf Coast Art Center, and The St. Petersburg Museum of Fine Arts were each chosen to receive \$45,295.

Elmer Pilcher died in January, 1977, and a year later when the terms of his will became public information, newspapers carried long articles about his generous bequests.

He was described as a kind, gentle man who had been so publicity shy there were no recent photos of him available for the press. Newspapers had to settle for one that bore the imprint of a 1954 passport validation seal.

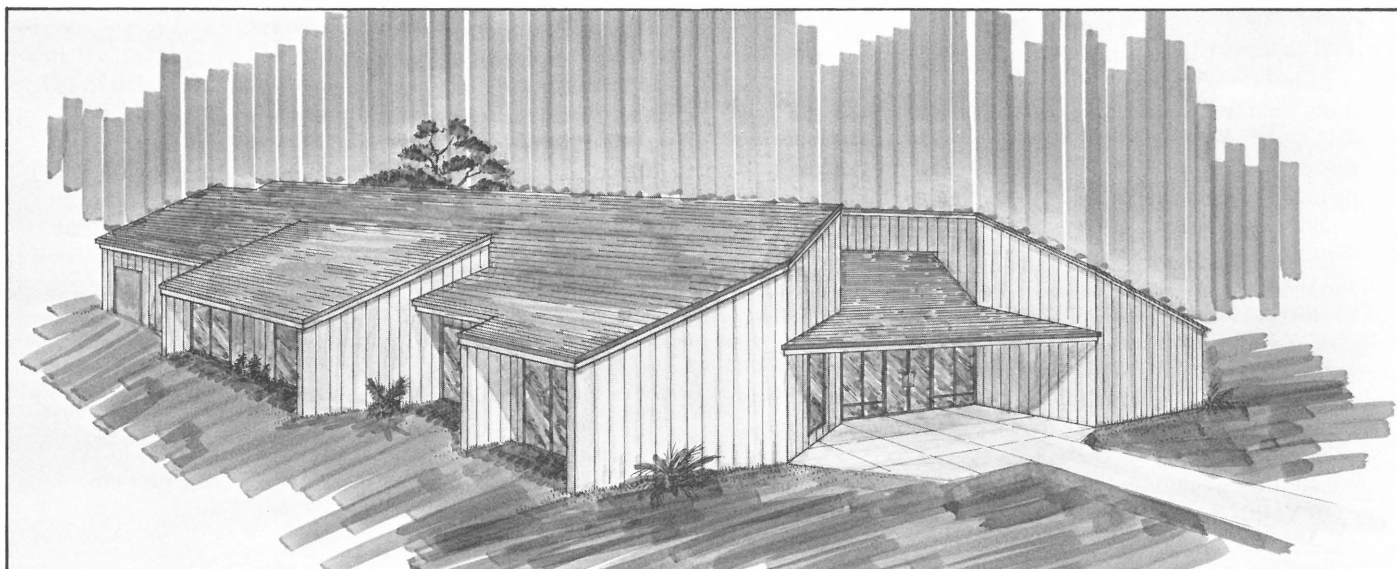
"He probably wouldn't like all this," said Nancy, referring to the publicity, "but I think he's got it coming."

Yes, he certainly does.

His bequest, together with gifts of cash and stocks he and Nancy gave to The Youth Ranch prior to his death, will build a new administration building and speed our progress toward future goals. The Elmer and Nancy Pilcher Administration Building represents one giant step toward the day when The Youth Ranch will be operating at full capacity.

That will be an important day, and perhaps it will compensate Nancy Pilcher for the discomfort of unsolicited publicity. We hope it will.

Artist's sketch of the proposed Elmer and Nancy Pilcher Administration Building.





# Merger of Ranches, Villa and Youth Fund vastly improves the way we do our job

You people out there who have been watching the development of the Florida Sheriffs Youth Fund, Boys Ranch, Girls Villa and Youth Ranch — have you noticed anything new?

Are you aware that our cogs and pulleys are operating more smoothly....more efficiently....more effectively?

Perhaps not.

The inner workings of our child care activities are not very obvious to outside observers; but to Sheriffs and other “insiders,” it’s obvious we have been going through an extensive trim up, shape up process that has vastly improved the way we do our job.

We are operating more smoothly!

We are more efficient!

We are more effective!

And the net result will be better care for needy and neglected youngsters.

After many months of professional planning and research, we have completed the evolutionary process of merging the Youth Fund, Boys Ranch, Girls Villa and Youth Ranch into one corporation, without upsetting the uniqueness, independence or identity of any of our institutions.

It wasn’t simple, and it wasn’t easy; but it was accomplished, and it is already beginning to pay dividends.

Our old organizational structure was something we grew into, sort of the way a child grows into buck teeth.

We established the Boys Ranch in 1957, and we developed it into a model child care institution. Independent auditors praised our accounts and records. Officials from other institutions visited us, then went back home to copy some of our administrative procedures.

In 1970 we chartered The Girls Villa as a separate legal entity, with its own board of directors, its own budget, and its own unique program.

In a few years we added The Florida Sheriffs Youth Fund to generate, receive and disburse funds to the Ranch and Villa — to provide a sort of a financial umbrella for our growing child care activities — and this third legal entity resulted in yet a third board of directors, budget and program.

By the time we created our newest child care facility, The Florida Sheriffs Youth Ranch, in 1976, it was painfully obvious that our corporate structures, although soundly organized, were getting unwieldy simply because they were individual entities. Our “buck teeth” were showing, and once we set about correcting them, the trauma we went through often resembled painful dental work.

The obvious answer was to merge the Youth Fund, Ranch, Villa and Youth Ranch into one corporation without destroying their identities. We knew many of our supporters had strong attachments — sentimental ties — to each of our institutions. We knew we could merge, but we could not “submerge” any of our institutions.

The solution we adopted was to merge the Boys Ranch, Villa and Youth Ranch into the Youth Fund; and after many months of meetings, conferences and court appearances the merger was finally completed on October 1, 1977.

On that date the Youth Fund lost its umbrella image, and instead of just giving financial shelter to the Boys Ranch, Villa and Youth Ranch, it reached out to pull them into its corporate embrace (we’re running out of metaphors!) and well — anyhow — no more “buck teeth.”

The Boys Ranch, Girls Villa and Youth Ranch programs are continuing to operate essentially as they were before; they simply no longer exist as separate and individual entities.

Where we formerly had three boards of directors or trustees, three sets of minutes, three budgets, three annual audits, three of practically everything, we now have just one board, one set of minutes and one budget.

There is just one corporate entity now: Florida Sheriffs Youth Fund, Inc. The Florida Sheriffs Association has appointed a group of 15 Sheriffs and laymen to run the corporation, and these members in turn have elected a board of directors to handle month-to-month decisions.

This board held its first meeting at The Boys Ranch February 16, 1978. The members are Sheriff Don Moreland, Ocala, Chairman; Sheriff Frank Cline, Arcadia, Vice Chairman; Sheriff Dolph Reddish, Starke, Secretary-Treasurer; Leonard Russek, Tampa; Sheriff Robert Leonard, Live Oak; Sheriff John Whitehead, Lake Butler; and Fred Littlefield, Kissimmee.

Harry Weaver, formerly executive director of The Boys Ranch, Girls Villa, Youth Ranch and Youth Fund, is President of The Youth Fund Corporation.

There is one important change that donors should be aware of: all checks should be made payable to The Florida Sheriffs Youth Fund, Inc., but gifts can be designated for the benefit of any one of our institutions. The same is true of memorial gifts.

If, on the other hand, donors do not indicate a preference for any particular institution, their gifts will be used wherever the greatest need exists.

The central business office will continue to be located at The Boys Ranch. The mailing address is Florida Sheriffs Youth Fund, Inc., Boys Ranch, Florida 32060.

One of the attractive features of the new corporate structure is that additional child care institutions can be added in the future without creating any additional boards, budgets or corporate charters.

Thus the restructured Youth Fund not only improves our current administrative set up, but also provides an efficient vehicle for future expansion.

## FACTS ABOUT OUR FINANCES

Copies of the latest annual report for the Florida Sheriffs Boys Ranch, Girls Villa and Youth Fund are available and will be mailed upon request. Address your request to Harry Weaver, President, Florida Sheriffs Youth Fund, Boys Ranch, Florida 32060.



## A lesson from the woods and fields

When is a weed not just a weed? Margaret McDaniel, a teacher's aide at The Boys Ranch Education Center, gave Ranchers the answer when she taught them how to make floral arrangements from dried wild flowers and plants found in the area. She is pictured checking the handiwork of Ricky Sandusky and Kenny Taylor (seated at table); Mike Burch; and Todd Connaway (seated on sofa arm).



### FLORIDA SHERIFFS YOUTH FUND IS...

A charitable, non-profit corporation, sponsored by the Florida Sheriffs Association, to manage and operate the Boys Ranch, the Girls Villa, the Youth Ranch, and any other youth programs that may later be developed by the Florida Sheriffs Association. One of the most important functions of the Youth Fund is the raising, receiving, budgeting and disbursing of funds for its programs. Gifts and bequests can be made to the Youth Fund for the exclusive benefit of any single youth program, such as the Boys Ranch, Girls Villa, or Youth Ranch. They can also be made to the Youth Fund, without restriction, to be distributed among existing programs where they are most needed or to be used for the development of new programs at the discretion of the Governing Board.

MAILING ADDRESS — Florida Sheriffs Youth Fund, Inc.  
Boys Ranch, Florida 32060      PHONE — AC904 842-5501

#### BOYS RANCH

**IS . . . .** a home for dependent, neglected and homeless boys sponsored by the Florida Sheriffs Association and operated under the management of the Florida Sheriffs Youth Fund, Inc. It is not an institution for delinquents.

The Boys Ranch was founded in 1957 and is located nine miles north of Live Oak, Florida. It has approximately 100 boys in care at any given time, and it is supported almost entirely by voluntary gifts through the Florida Sheriffs Youth Fund, Inc.

#### GIRLS VILLA

**IS . . . .** a similar institution for needy and worthy girls located near Bartow, Florida. It was founded in 1970. The first buildings were completed in July, 1972, and the first girls were admitted in August, 1972. Current enrollment is 24 girls.

Mailing address and phone number for the Boys Ranch, Girls Villa and Youth Ranch are the same as for the Youth Fund.



#### YOUTH RANCH

**IS . . . .** the newest group child care facility sponsored by the Florida Sheriffs Association. It was founded in 1976 and is located near Clearwater, Florida. The first youngsters are expected to be enrolled in 1978. It will provide a home-like environment for brothers and sisters who are dependent, neglected or homeless.



The morning after — just charred wood and smoldering embers.



## Barn, hay crop and saddles destroyed in \$50,000 fire

It flared up November 13, after dark, and for sheer excitement nothing has ever happened at the Boys Ranch to match the big barn fire.

There were only a few small tongues of flame when the blaze was discovered, and an alarm was turned in immediately, but in just a matter of minutes the whole structure exploded in an inferno.

There's nothing quite like a wooden barn and 10,000 bales of hay going up in flames, and this was a night the boys will long remember.

Some were frightened by the giant flames silhouetting fire trucks and firemen. Some were excited, and some who had sweated mightily in the hayfields last summer were frustrated and angry, as they watched the fruits of their hard labor going up in smoke.

"The kids are in there," someone yelled, and a shiver of horror went through the crowd, but a collective sigh of relief soon followed when it was learned that all animals — including the baby goats — had been saved.

Despite the efforts of firemen from the Boys Ranch, Live

Oak and The Florida Division of Forestry, the barn and the hay crop were a total loss. All of the saddles, bridles, halters and similar items stored in the "tack" room were also destroyed.

The total loss was estimated at \$50,000, but fortunately the 1964 vintage barn was adequately covered with insurance, and it has been replaced with a configuration of three barns designed to reduce future fire hazards.

One sometimes painful aftermath remains. The saddles, bridles and similar "tack" destroyed in the fire have not been replaced, and consequently the boys are required to ride bare-back --- sometimes with improvised bridles.

There are frequent requests for liniment to treat sore and chafed muscles --- and frequent speculation about how nice it would be if someone "out there" who has some extra "tack" would donate it to The Ranch.

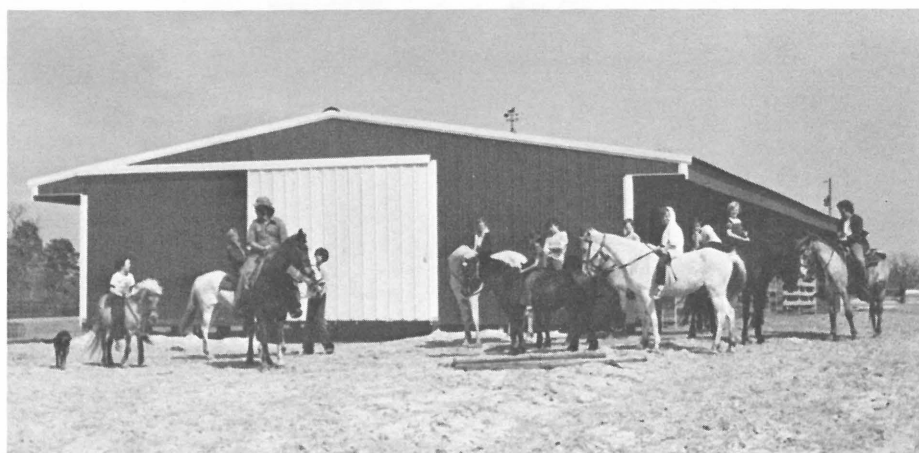
Donations will certainly be appreciated --- especially by the boys who haven't yet adjusted to riding "wild Indian style."

The fire --- its cause unknown --- is just a bad memory for some boys, while for others the pain lingers on.





Two hay barns like the one pictured above, and the horse barn pictured at right, have replaced the barn that burned. The destroyed hay crop also had to be replaced.



## Our Top Priority Needs

“What are your primary needs?”

This is the question most frequently asked by persons interested in giving gifts to The Florida Sheriffs Youth Fund, and the answer varies from time to time due to the fact that our programs are constantly growing and improving. Therefore, for the benefit of our readers we are publishing the following list, which certainly does not cover all of our needs, but does include those to which we have currently assigned top priority:

1. Six residence cottages (two each for Boys Ranch, Girls Villa and Youth Ranch). Each will cost approximately \$200,000. The need is urgent because our present residence facilities will not accommodate the youngsters on our long list of applicants for admission.
2. Operating funds to pay for food, clothing, medical care and other basics. Because of growth and inflation we are always “hurting” in this category of our budget.
3. Renovation of three of our older residence cottages at a cost of \$36,000 (\$12,000 each).
4. An activity center for The Youth Ranch. Estimated cost: \$395,000. This will provide an education center, arts and crafts facilities, a chapel and indoor recreation facilities.
5. Two 12-passenger vans to transport youngsters to doctor and dental appointments, to special training or therapy programs, and on educational field trips. Estimated cost \$15,000.

6. Two walk-in freezers, one for the Villa and one for the Youth Ranch, so food can be purchased in larger quantities at lower cost. The estimated cost is \$4,000 per freezer.
7. Funding to provide staff and materials for a remedial education program at The Youth Ranch. Estimated cost \$35,000.
8. Lawn tractor, with mower attachment. Estimated cost \$1,700.

## Alumni Reunion May 19-21

The Boys Ranch Alumni Association will hold its annual reunion at the Ranch, May 19-21, and President Leonard Russek is urging all former Ranchers and staff members to make plans to attend.

The following Alumni Association members are in charge of various phases of the arrangements: Jim Brettingen, motel accommodations and reservations; Robert Knight, activities at the Ranch; Vivian Starling, registration; Wally Edwards, Our Friend Award; Sue Lamb, banquet decorations; Greg Swisher, hospitality; Albert Williams, special guests; Ronnie Williams, Rancher recognition and involvement; and Cliff and Hetty Jackson, alumni house hospitality.



## New Youth Fund movie now available

"As the Twig is Bent," a new movie about life at The Florida Sheriffs Boys Ranch, Girls Villa and Youth Ranch, is being distributed throughout the state by The Florida Sheriffs Youth Fund.

Filmed in August, 1977, "Twig" was produced by Tel-Air Interests, Inc., of Miami, and was given its premiere showing in St. Augustine, January 16, 1978, during the Annual Mid-Winter Conference of The Florida Sheriffs Association.

It is a 14-1/2-minute color-sound movie filmed entirely at the Boys Ranch, Girls Villa and Youth Ranch. No professional actors were used. Only residents and staff members of the institutions appear in the film.

Arrangements for having "Twig" shown to clubs, churches and other groups can be made by getting in touch with your local Sheriff, or by contacting The Florida Sheriffs Youth Fund, Boys Ranch, Florida 32060. The Youth Fund telephone number is (AC 904) 842-5501.



"As the Twig is Bent" includes scenes from The Florida Sheriffs Boys Ranch, Girls Villa and Youth Ranch, but all of the photos on this page were taken during the filming at the Boys Ranch.





Mrs. Ainslee Gryte, President of the Sunshine State Women's Chamber of Commerce (SSWCC), presents a cash gift of \$3,500 to Lloyd Godwin, Resident Director of The Villa. The presentation took place during a tour of the nearly completed Villa Activity Center. Looking on are members of the SSWCC Board of Directors and Don Genung, Florida Sheriffs Youth Fund Vice President for Planned Giving. Judy Ongley, remedial education teacher, joined the group for the picture taken outside the Activity Center. She is standing in front of Genung.



## Villa founders will equip remedial education unit

The Sunshine State Women's Chamber of Commerce (SSWCC), original founders of The Florida Sheriffs Girls Villa, is still actively involved and has been giving substantial gifts to the project from time to time.

The latest act of generosity from this energetic group of Pinellas County ladies is a pledge to pay for the teaching equipment to be used in the Remedial Education Program which will be a special feature of the new Girls Villa Activity Center.

After announcing their intentions, members of the SSWCC boarded a bus, traveled to Bartow, had lunch with Villa staff members, toured the partially finished activity center at the Villa, and presented a check for \$3,500 as the first payment on their pledge.

The SSWCC ladies, all members of the board of directors, were accompanied by former Pinellas County Sheriff Don Genung, Florida Sheriffs Youth Fund Vice President for Planned Giving, and Joe Spenard, Resident Director of The Florida Sheriffs Youth Ranch; Mrs. Genung and Mrs. Spenard.

Some of the SSWCC ladies recalled that Genung played a part in the founding of the Villa when he was Sheriff of Pinellas County. They were generously supporting The Florida Sheriffs Boys Ranch, and expressed to Genung their regret there was no similar institution in Florida for needy and neglected girls.

He urged them to start one, and soon afterward they announced they were raising funds for a Girls Villa. The ladies raised many thousands of dollars, but they began to realize building and operating such an ambitious venture was beyond their resources.

With Genung assisting and advising them, they contacted The

Florida Sheriffs Association and asked it to take over the project. The Association agreed to do so, and in 1970 chartered The Florida Sheriffs Girls Villa.

The first buildings were completed in July, 1972, and the first girls were enrolled in August, 1972.

Today the Villa is a widely acclaimed example of professional child care with an enrollment of 24 girls on a campus that represents an investment of almost \$2 million.

All this, because Sheriff Don Genung years ago said to a group of determined and courageous ladies: "Why don't you start one?"

### IF WE GOOFED --- PLEASE TELL US

This is the first issue of The Rancher for which all of the mailing labels were produced by computer. It was an important milestone because we were enabled to automate the entire mailing operation. We saved time and money. However, when we converted from hand-fed addressing to automated addressing we may have made some errors or some duplications. If we did — in other words, if your label is incorrect, or if you have received more than one copy of the Rancher — please let us know so we can make a correction. Thank you.





## Cindy Norman high scorer in **Girls Villa Field Days**

Cindy Norman won the Grand Champion Trophy by accumulating 16 points in the annual Girls Villa Field Days, and Ginny Akers was runner-up with 12 points.

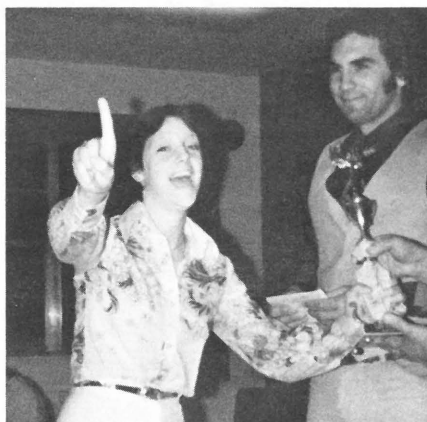
The two-day event was held on Saturday, January 28, and Sunday, January 29, with staff members Sheldon Bricker and Jim Grazier as coordinators. Tom and Flo Pachovas, staff members, were responsible for the Saturday night dinner; and Gen Grazier and Shirley Bricker, wives of the field day coordinators, were in charge of the Sunday night awards banquet. Sam Mc-Broom was the official photographer.

Girls 13 and under competed in the junior division; and girls over 13 competed in the senior division.

Midway in the weekend program there was a morning worship service led by Donna Rae Morgan, a staff social worker. Girls led the prayers and singing of hymns. Resident Director Lloyd Godwin gave an inspirational talk.

Events included running, jumping, canoe race, volley ball, bicycle race and tug of war.

Shelly Hartung reminds the banquet audience that she and Cindy Norman were "number one" in the canoe race. Pictured with Shelly is Jim Grazier.



Sheldon Bricker presents trophies to top scorer Cindy Norman (in white) and runner-up Ginny Akers.



---

# President's Perspective

A message from Harry K. Weaver, President  
of the Florida Sheriffs Youth Fund.

People frequently ask us what our greatest needs are in caring for dependent and neglected children. We have listed some of our needs elsewhere in this issue, but I would like to talk about just one of them that I consider to be particularly pressing and important.

We have 90 children on our waiting list for admission to the Boys Ranch, Girls Villa, or Youth Ranch, and this is not uncommon. We are helping them as much as we can, through counseling and referral services, while they are waiting, but they need residential care.

We see the need to add six additional cottages for children — two each at the Boys Ranch, Girls Villa, and Youth Ranch — to make residential care available to a greater number of children. Each new unit will be built to accommodate up to 12 children and their group parents increasing our capacity by 72 to an overall total of 195.

We are presently looking for funds to begin this vital construction project and also to endow the costs of operating and maintaining each new cottage as it is completed.



As in the past, we know that there will be those concerned and generous individuals or groups of people who will want to be a part of this enduring project and who will come forth to share with us.

Caring and sharing will get the job done and will get a lot of deserving youngsters off waiting lists and into programs where they can be helped.



## Aero Club Just Dropped In

The Clearwater Chapter, Florida Aero Club, literally "dropped in" for a visit at The Boys Ranch when members arrived in nine airplanes. Eight of the planes landed at the nearby Live Oak Airport and the occupants were transported by bus to the Ranch. Deputy Sheriff Ray Evans, piloting the DeHavilland "Beaver" pictured above, flew on to the Ranch air strip to give boys and staff members a close-up look at airborne law enforcement. The Beaver is owned by the Pasco County Sheriff's Department, and Evans is a member of the Aero Club. Following lunch and a conducted tour, the club presented a cash gift of \$100 to the Ranch, and one of the Club members matched it. (New Port Richey Press photo)



## Ranchers Win Livestock Show Awards

Greg Hicks, Lee McDonald and Robert Putnam (left to right) captured first place in the Gain-in-Weight contest during the Annual Suwannee Valley Youth Steer Show, in Live Oak. Greg was also chosen as the "Top Herdsman." (Independent Post photo)



# MEMORIAL FUND GIFTS

Contributions to the Florida Sheriffs Youth Fund are listed in alphabetical order by name of the deceased. Donors are listed after the name of the person in whose memory they contributed.

## A

**MYRTLE ABBOTT**  
Mr. William J. Abbott

**WAYNE ABBOTT**  
Mr. William J. Abbott

**HERBERT E. ACOSTA**  
Thelma S. & William J. Green, Sr.

**VAN ADAIR**  
Ray, Nancy & Marion Lozier

**MRS. ANNA L. ADAMS**  
Mrs. LeRoy DeWitt

**GRACE MOORE ADAMS**  
Mrs. Velma B. Bradshaw

**HYMAN ADAMS**  
Mrs. Vera W. Bassler  
Mr. & Mrs. Steve Houk

**J. E. ADAMS**  
Mrs. Mabel M. Mixon

**JACK ADCOCK**  
Mr. & Mrs. William T. Baynard

**CHARLES ADLER**  
Mr. & Mrs. Don Howell & David  
Bill Blount  
Charlie Richardson  
Mr. & Mrs. Wallace Storey

**HERMAN W. ALBRECHT**  
Mrs. Lillian Albrecht

**LELA ALBRECHT**  
Janet Caprice  
Mr. Vernon Bengtson  
Mr. & Mrs. E. Fornof  
Pat Cataldo  
Mrs. Charles E. Howe  
Juanita Anderson & Naomi  
Ms. Louise M. Keppie  
Linea Anderson  
Rick Anderson  
Mr. Carl I. Bengtson  
Mr. C. M. Cataldo  
Mrs. Martha Swanson  
Mr. George N. Harman, Sr.  
Mr. George N. Harman, Jr.

**CHRIS ALBRIGHT**  
Mr. & Mrs. Dick Birdsall  
Mr. Wendell H. Hall  
Mr. & Mrs. J. Miolo  
Mrs. Harry Birdsall  
Cathy Raynor  
Mr. & Mrs. Wayne Seaman  
Montross Construction Company  
Mr. & Mrs. Robert V. Rambeau  
Mrs. Elsie C. Swett

**MR. & MRS. A. L. ALEXANDER**  
Mr. & Mrs. Guy E. Carleton

**JAMES FRANKLIN ALEXANDER**  
Mrs. Elizabeth Alexander

**DAVID BRUCE ALGER**  
Mr. & Mrs. Ray J. Knipe

**WILLIAM ALLAN, SR.**  
Mrs. William Allan, Sr.

**FRANCES MERCER ALLEN**  
Mr. & Mrs. William Sowers

**FRED C. ALLEN**  
Mrs. Robert H. DeBell

**FRED W. ALLEN**  
Mrs. Thomas G. McFarland  
Mr. & Mrs. Theodore L. Fitch

**JAMES AUBREY ALLEN**  
Mrs. Dorothy H. Clark

**MRS. MILDRED ALLEN**  
Mr. & Mrs. J. R. Wathen

**JUDGE W. P. ALLEN**  
Mr. & Mrs. Wallace Storey

**FRANK C. ALLERS**  
Neighbors on Sunny Shore Dr.

**ROBERT ALLIN**  
Mr. Don Genung  
Mr. & Mrs. W. D. Sexton

**HOWARD ALLSOPP**  
Mr. W. R. Ward, Jr.

**MRS. KLAUS ALLWURDEN**  
Mr. Klaus C. J. Allwurden  
Mr. John MacDonald  
Mr. James H. Cole

**NICHOLAS ALTMAN**  
Mrs. Lili Altman

**CLYDE ALVAREZ**  
Mr. & Mrs. J. C. Turner

**A. J. AMSTUTZ**  
Ms. Mary M. Amstutz

**WILLIAM R. ANCHORS**  
Capt. & Mrs. H. L. Marr

**MR. & MRS. J. W. ANDERSON**  
Mrs. Isabel A. Ogle

**PAUL G. ANDERSON, JR.**  
Mrs. Isabel A. Ogle

**PAUL G. ANDERSON, SR.**  
Mrs. Isabel A. Ogle

**ALEXANDER M. ANDREWS**  
Jean M. Hamrick & David J. Hamrick, Jr.

**BENJAMIN C. ANDREWS**  
Mrs. Carrie M. Andrews

**CAPT. ROBERT T. ANGEL**  
Mr. William H. Bryan, Jr.

**HAROLD ANGELL**  
Ms. Bernice Corbin  
Mr. & Mrs. Ray Howard

**NORMAN E. ANNICH**  
Mrs. Norman E. Annich

**SAMUEL ANNUNZIATA**  
Mrs. Samuel Annunziata

**CHARLES ANSPAUGH**  
Mrs. Abner A. Wolf

**MRS. DELLA APPELYARD**  
Mr. & Mrs. Charles Simpson  
Mrs. Myra Anderson  
Mr. John P. Clarkson, Jr.  
Mr. & Mrs. R. O. Richards  
Mr. & Mrs. James A. Burris  
Mrs. Mildred Waugh  
Mrs. Hazel D. Stewart  
Mr. & Mrs. Carl Roberts  
Mrs. Catherine G. Wright  
Mrs. E. V. Goodman  
Mr. & Mrs. Bill deBordenave  
Mr. W. V. Culley  
Mr. L. P. Reynolds  
Mr. & Mrs. Frank A. Prather  
Mrs. Grace B. Kendall  
Ms. Sarah V. Barden  
Mrs. Martha B. Barnes  
Dr. & Mrs. J. G. Goodyear  
Miss Dorothy L. Hutchins  
Mrs. Paul Magee  
"Lots for Little"  
Mr. & Mrs. L. W. Culley

**MARK ARCELLE**  
Mrs. Mark Arcelle

**MRS. GEORGE A. ARCHIBALD**  
Mr. George A. Archibald

**HENRY C. ARENDS**  
Mrs. Lila B. Arends

**NORMAN P. AREY**  
Mr. & Mrs. Richard P. Cope

**T. L. ARLINE**  
Dr. Joe D. Rawlings  
Mr. & Mrs. H. C. Woodall  
Mr. R. J. Arline

**B. N. ARMSTRONG**  
Mrs. B. N. Armstrong

**RAYMOND CLYDE ARMSTRONG**  
Mr. & Mrs. L. L. Schneider

**WILLIE E. ARRINGTON**  
Mrs. Isabel A. Ogle

**MRS. VERNA ARROWSMITH**  
Col. & Mrs. N. J. Wiley, Jr.  
Mr. & Mrs. W. R. Lawson

**TRUE S. ARTHURS**  
Mr. & Mrs. John H. Mize, Sr.

**MISS KATHLEEN ASH**  
Mrs. Antoinette T. Buhr

**KENNETH D. ASHLEY**  
Mrs. Bertha M. Ashley

**ROBERT D. ASHLEY**  
Estate of Lidmilla A. Ashley

**THOMAS W. ATKIN**  
Mrs. Harry W. Cole  
Mr. Rodney M. Himes

**MICHAEL ATTANASIO**  
Mrs. Augusta Attanasio

**FRANK J. ATTERTON**  
Mr. Robert A. Atterton

**R. Y. AUSTIN**  
Mrs. Mary S. Austin

**ALBERT AYMER, SR.**  
Mrs. Margaret E. Thergesen

## B

**HARVEY L. BACHELDER**  
Mrs. J. Pitt Tomlinson, Jr.

**ROSEMARY LILLIAN BACHTLER**  
Mr. William Bachtler

**RUTH BAIN**  
Mr. Leon Tolar

**PETER BAIZA**  
Bernadine Baiza

**OWEN B. BAKER, SR.**  
Mr. & Mrs. Charles J. McGlave

**PAULINE E. BAKER**  
Florida State Firemen's Auxiliary

**MRS. CHARLES P. BALLARD**  
Mr. & Mrs. James H. Ballard, Jr.

**MRS. BALMOND**  
Mr. & Mrs. Shelby Mullins

**ARTHUR G. BAMOND**  
Mrs. Arthur G. Bamond

**STANLEY BANKARD**  
Mrs. R. B. Twitty

**EFFIE BANKS**  
First National Bank of Kissimmee

**BILL BARBER**  
Mrs. David J. Hamrick

**FRANK BARCLAY**  
Mrs. Lila Cooney

**PETE BARNETTE**  
Mrs. Dwight W. Lambe

**J. B. BARRON**  
Mr. & Mrs. W. B. Barron

**ROGER E. BARRUS**  
Mrs. Catherine G. Barrus

**A. J. BARRY**  
Mr. & Mrs. John Blaich

**JOHN BARRY**  
Mrs. J. B. Barry  
Walter Culley, Sr.

**ELLIOT BARTA, W4SCY**  
Mr. & Mrs. John Schmutz  
Mr. & Mrs. Bernard Christensen

**MRS. NELLIE A. BARTLETT**  
Mr. & Mrs. Frank Mulhern

**GERALD W. BARTMESS**  
Mr. Angus Williams, Jr.

**J. H. BARTON**  
Mr. Walter R. Herbert

**DR. JANE BASILE**  
Mrs. Louise G. Van Der Karr

**MRS. ALINE BASS**  
Sheriff Clayton Williams

**DONALD BASS**  
Mr. & Mrs. Earlo Tanner  
Mr. & Mrs. James W. Barker

**JACK M. BASS**  
Mr. & Mrs. Dan Autrey

**LESTER BASS**  
Mr. & Mrs. Earlo Tanner  
Mr. & Mrs. John E. Carroll

**ANNA BASSETT**  
Mr. & Mrs. Abe Bassett

**MORRIS B. BASSFORD**  
Mr. & Mrs. J. Earl Steinhauer

**ALBERT M. BATES**  
Mr. William H. Miley  
Mrs. Eleanor K. Quinn

**ERLE BATTLE**  
Mrs. Nancy Battelle

**WILLIAM J. BAUMBACH**  
Mr. & Mrs. John E. Worsfold

**ROBERT H. BAUMGARTNER**  
Mrs. R. V. Durrance  
Jason & Shannon Hicks

**FLOYD E. BAXLEY**  
Mrs. Leon Rothenberg

**IRVING N. BAXTER**  
Mrs. Kathryn Baxter

**MRS. ELOISE BAYLY**  
Mrs. Rose Marie Gregory  
Mr. & Mrs. S. C. Mickler

**EVAN BECHTOLD**  
Mrs. Evan Bechtold

**ROBERT BECHTOLD**  
Mrs. Evan Bechtold

**WILLIAM H. BECK**  
Mrs. Robert S. Fenimore, Sr.

**RALPH R. BECKETT**  
Grace, Gladys & Fred Baeder

**PETER BEDDIA**  
Miss Eleanor D. Zeller

**BLANCH BEDNALL**  
Mr. & Mrs. Carl E. Johnson

**CLARA BEEBE**  
Mrs. W. C. Petry

**TOMMY BEERMAN**  
Mr. & Mrs. Daniel Milton

**GEORGE BEHNKE**  
Elizabeth O. Townsend

**HERBERT G. BEHRENS**  
Mrs. Herbert G. Behrens

**GEN. ROBERT S. BEIGHTLER**  
Mr. & Mrs. Murray D. Shaffer

**HUGH A. BELL**  
Mrs. Hugh A. Bell

**J. J. T. BELL**  
Mr. & Mrs. P. Nickerson

**RUTH BELLES**  
Mr. & Mrs. R. L. Allabaugh  
Mr. & Mrs. Arthur J. Brodrick

**BYRON BENDER**  
Mrs. F. Eberstadt

**RAYMOND BENDER**  
Mr. & Mrs. J. Pergola  
Mr. & Mrs. N. Vitale

**CHARLES F. BENFORD**  
Mr. & Mrs. Roswell Myers

**MRS. E. H. BERGE**  
Mrs. P. N. Lingenfelter

**MRS. A. H. BENJAMIN**  
Mr. & Mrs. Frank Wurthner

**ROY BENJAMIN**  
Mr. & Mrs. George W. Hopkins

**CHARLES B. BENNET**  
Mrs. Richard Warner

**ALBERT BENNINGER**  
Mrs. Adrienne M. Weaver

**CONSTANCE BENSLEY**  
Mr. Phillip J. Zozycki

**ANTHONY J. BERBERET**  
Mrs. Anthony J. Berberet

**C. A. BERGER**  
Mrs. Evelyn S. Berger

**SOLWEIG BERGMAN**  
Arne Bergman

**MR. & MRS. JOSEPH BERNIK, SR.**  
Mr. J. L. Bernik

**DR. SAMUEL BERNOW**  
Mr. & Mrs. Peter C. Vietti

**W. E. BIKLE**  
Mrs. W. E. Bikle

**MRS. ALMA BITTNER**  
Henry Hoffman & Son Printers

**ROBERT C. BLACK, M.D.**  
Mr. & Mrs. Julius C. Procchi

**CAPT. DAVE BLACKBURN**  
Capt. Blackie Snow

**ALBERT L. BLAIKIE**  
Mrs. Albert L. Blaikie

**WILLIAM BLAKENEY**  
Mr. & Mrs. Walter Blass

**JOHN GRAY BLAKLEY**  
Beach Park Improvement Association, Inc.

**VICKIE BLANCHARD**  
Mr. & Mrs. Del Blanchard  
Dorothy Blanchard

**IVAN BLAUSER**  
Mr. & Mrs. Bradley Hoon  
Silver Cloud Orchestra

**ADALBERT L. BLOSS**  
Mrs. Anna S. Bloss

**MONROE S. BOBST**  
Mrs. Burnett W. Saunders

**MRS. ALFHILD BOCK**  
Mr. Walter P. Bock

**A. M. BOCKOVEN**  
Mr. & Mrs. Ralph Holopierek

**CLAYTON F. BOGGESS**  
Mrs. Clayton Boggess  
Mr. & Mrs. Don Yeats

**E. STOKES BOLIN**  
Mrs. Susanna S. Bolin

**MRS. MUSIE BONAR**  
Mr. & Mrs. W. T. Suber, Jr.

**PETE BONTSEMA**  
Mr. & Mrs. Herman Koop

**IRENE W. BOTTING**  
Mr. John H. Botting, Jr.

**CLYDE R. BOWEN**  
Mr. & Mrs. David Merritt

**ERNEST O. BOWER**  
Mrs. E. O. Bower

**M. CECIL BOWERS, SR.**  
Mrs. Jean Hamrick

**MARY JO BOWHALL**  
Mr. & Mrs. Orla P. Bowhall

**MISS MARGARET BOWMAN**  
Mr. R. C. McMullen

**HOMER S. BOYER, SR.**  
Ms. Viola S. Humphries

**SHERIFF ROSS E. BOYER**  
Maj. A. Tony Montagnesi

**ANTHONY BRADAC**  
Mrs. Anthony Bradac

**RAY BRADDOCK**  
Mr. E. D. Gregory

**MARVIN WALLS BRADEN**  
Mrs. Marvin W. Braden

**W. W. BRADSHAW**  
Raymond & Jim Camp  
Mrs. Ann C. Malpas

**FRANK O. BRAFORD**  
Mrs. Frank O. Bradford

**MRS. HELEN BRAMMER**  
Mr. & Mrs. Jess Yarborough

**SGT. EDWIN H. BRANDT**  
Mrs. Helen M. Hulbert

**OLIVE MAE BRANNAN**  
Howard A. Maddox, Inc.

**J. B. BRANNEN**  
Mrs. Lucille Leslie

**RICHARD BRANSFORD**  
Dr. L. E. Bransford

**J. E. BRANTLY**  
Mr. & Mrs. J. L. McMullen

**MRS. RUTH BRASS**  
Mrs. Charles A. Harris, Sr.

**MRS. DOROTHY ANN BRENT**  
Mrs. Irene B. Erickson

**GLODENIA BRIGHT**  
Mr. & Mrs. M. J. Stedwell  
Emilie E. Richards  
Mrs. Charlotte I. Patzke  
Mr. & Mrs. Alfred B. Jones  
Mr. & Mrs. Jerry Blair  
Mr. & Mrs. John Blair  
Mr. & Mrs. William Blair  
Mr. David E. Carpenter  
Mrs. Irene Carpenter  
Mr. & Mrs. Robert Walker  
Mr. & Mrs. Paul Fessler  
Mrs. H. J. Longley  
Mrs. Betty R. Stewart  
The Ernest Royer Family

**MILTON BRODY**  
Mr. & Mrs. A. G. Dowden

**RONALD R. BROGDEN**  
Mrs. Ronald R. Brogden  
Mrs. G. L. Hilyer

**H. CLIFFORD BROKAW, JR.**  
Mr. & Mrs. William J. Green, Sr.

**LAWRENCE BROOKS**  
Mrs. Carl DeLucenay & Family

**B. F. BROWN**  
Mrs. Elsie Brown

**C. C. BROWN**  
Mrs. A. R. Matthews  
Mrs. E. H. Stockton

**MRS. EVA BROWN**  
J. E. Mason, Inc.

**L. CHAUNGY BROWN**  
Mr. & Mrs. W. N. Purcell

**PAUL M. BROWN**  
Mr. & Mrs. W. N. Purcell

**REV. R. I. BROWN**  
Mr. & Mrs. H. L. Capps

**SETH L. BROWN**  
Mrs. Seth L. Brown

**THEODOR V. BROWN**  
Mrs. Mildred Shafer Brown

**U. L. BROWN**  
Mrs. U. L. Brown & Buddy

**JOHN W. BROWNING**  
Mr. & Mrs. F. H. Morse

**WILLIAM BRUENING**  
Mr. Robert DeCandia

**HOWARD A. BRUNDAGE**  
Mr. & Mrs. Thomas F. Strobel

**WILLIAM BRYAN**  
Mr. & Mrs. Charles B. Andersen, Jr.

**HERMAN V. BUCHER**  
Mrs. Florence Bucher

**DREW BUCKLAND**  
Mr. & Mrs. James Baird, Jr.

**S. A. BUCKMASTER**  
Mr. & Mrs. H. L. Crutchfield  
Mrs. Charles A. Harris, Sr.

**MARK A. BUCKO**  
Mr. & Mrs. Henry S. Bucko

**JOHN BUDD**  
Mrs. Flora C. Budd

**CARL BULLWINKEL**  
Mrs. Edward Wrede

**ORVILLE BULMAN**  
Chris Christensen & Peggy Shea

**ROBERT BULMER**  
Mr. & Mrs. James Gamble  
Mr. & Mrs. Edwin H. Rohde  
Mr. & Mrs. Robert E. Wills

**BOB BUNDTY**  
Frank de Veer

**ROBERT C. BUNGE**  
Estate of Marion Page Bunge

**GORDON H. BURKE**  
Mrs. Gordon H. Burke

**JOSEPH S. BURKETT**  
Mr. & Mrs. Roy Gilbert  
Margaret H. Gose  
Howard A. Maddox, Inc.  
Mr. & Mrs. J. M. McAdams  
Dr. Anne S. Newsome  
Mrs. Millie Sampson  
Miss Martha A. Lauderback

**MARJORIE M. BURNETT**  
Mr. Lewis F. Mottice

**MRS. C. D. BURR**  
Mr. & Mrs. Frank Branan, Jr.

**JAMES I. BURRILL**  
Mrs. Margaret Geel Maurino

**RANDY BURRIS**  
Mr. Brandon H. Asher

**WILLIAM AND HENRIETTA BURSLEM**  
Mr. & Mrs. Harold E. Randol

**LT. COL. EMMETT B. BURTON**  
Mitchell L. Williford

**WAYNE L. BUSH**  
Etta R. Bush

**ALICE BUSHMAN**  
Mr. & Mrs. John Economon

**HERMAN BUSSACKER**  
Mrs. Chester Wells

**JOHN BYRNE**  
Mrs. Eleanor K. Quinn  
Margaret K. Jackson

## C

**PERCY CADDY**  
Mr. Ernest J. Caddy

**MIKE CAHILL**  
Rowe-Mitchell, Inc.

**STEPHEN A. CALDER**  
Mr. & Mrs. F. C. Powell, Jr.

**D. P. CALDWELL**  
Mrs. S. F. Elder

**MRS. F. CALHOUN**  
Mrs. Phyllis Mauro

**JAMES W. CAMERON, JR.**  
Mr. & Mrs. Wallace Storey



W. P. "BILL" CAMPAS  
Mr. & Mrs. W. J. Durrance

LOISE W. CAMPBELL  
Mr. Cecil C. Campbell

MRS. NELL CAMPBELL  
Mrs. Dorothy H. Clark

V. S. CAMPBELL  
Mrs. Helen M. Campbell

VINCE CAMPBELL  
Mrs. Lelia Ruth Love

ED CANTWELL  
Miss Sarah Barden  
Miss Nell Barden  
Mrs. Carolyn B. Smith  
Mrs. Rebecca B. Kinzie

MR. & MRS. JOSEPH CARBONE  
Mrs. Manuel Fino

BERNARD CARRIER  
Mrs. Bernard Carrier

MR. & MRS. GUY M. CARLETON  
Mr. & Mrs. Guy E. Carleton

JACK CARLOW  
Mrs. Blanche Carlow

CHARLES P. CARR  
Mr. & Mrs. M. T. Crowder

IVA E. CARTER  
Dr. Harold Buell  
Mrs. Cynthia Coletto  
Mrs. Ruth Sargent  
Mr. Tracy L. Riddle  
Mr. Steven L. Carter  
Mr. & Mrs. Don Genung  
Mr. & Mrs. R. M. Petrick  
Mabelle Stephenson  
Mr. & Mrs. James A. Riddle III  
Mrs. Mabel Stubberfield

MRS. SOPHIE ALICE CARTER  
Mr. Carl Moore

WALTER CARTER  
Mrs. Frieda M. Frick

GEORGE E. CARVELL  
Mrs. G. E. Carvell

J. FERMAN CASEBOLT  
Mr. Paul H. Reid

PAUL CASEY  
Mrs. Johnny R. Hobbs

EARL CASS  
Harley & Martha Allbritton

ROBERT CASS  
Mrs. Bertha E. Talcott

MARK CASSIDY  
Mr. & Mrs. Robert Cassidy

MILDRED CATANESE  
Ms. Marie Bartolomei

JOE CATANZARO  
Mr. & Mrs. R. P. Leaphart  
Mr. Howard A. Maddox

WILLIAM HAYWOOD CATES  
Walter Cully, Sr.

HARRIET CAUTHORN  
Mr. & Mrs. F. M. Cooner, Jr.

REV. MARVIN H. CAVE  
Mrs. Marvin H. Cave

TED CHAMBERS  
Church of God, Port Salerno  
Mr. & Mrs. Nicholas Algozzini  
Mr. & Mrs. John S. Robinson  
Mr. & Mrs. Arthur J. Brodrick

WILLIAM N. CHANDLER  
Ms. Marguerite A. Robertson

MARTHA JEAN CHANDLEY  
Mrs. J. Pitt Tomlinson, Jr.

JOHN W. CHAPMAN  
Jean Hamrick & David Hamrick, Jr.  
Mrs. Barbara Jean Heideman  
Mr. R. C. McMullen

MRS. MAXINE CHAPPELL  
Mrs. Thomas G. McFarland

MRS. CHARDE  
Mr. & Mrs. James W. Laverty

MRS. BETTIE CHASE  
Mr. & Mrs. C. O. Rountree

RUSSELL D. CHASE  
Mrs. L. R. Monroe Biglow

JOHN W. CHENAULT  
Mr. & Mrs. E. Ray Carter

H. G. CHERRY  
Mr. & Mrs. J. C. Sharp & Bob  
JOSEPH MITCHELL CHESSER  
Mr. & Mrs. E. E. Whitaker

ALEXANDER GARDNER CHILDS  
Mrs. A. G. Childs

PAUL CHRISTENSON  
Mrs. Allan V. Wind

DOLLY CHRISTOPHER  
C&R Section, VA Office,  
Cincinnati, Ohio

Mr. A. S. McAffry  
Mr. & Mrs. Troy Rayburn, Jr.  
Mrs. H. Y. Willis  
Mrs. Nellie Worden

H. H. (BUSTER) CHRISTOPHER  
Mr. & Mrs. Roger L. Jones

EDWARD CIZEK  
Mrs. J. C. Jackman

ALFRED R. CLARK  
Mrs. W. D. Gillespie

FLOYD CLARK  
Mr. Broward Coker  
Mr. Roger MacFarlane  
Mr. & Mrs. Bill Page  
Sheriff & Mrs. Joe Sheppard  
Mr. & Mrs. Josh Spooner  
Mrs. F. H. Williams  
Hugh Williams  
Carol Williams Smith

FRANKLIN J. CLARK  
Mrs. Edith E. Clark

COM. JOHN R. CLARK  
Mr. C. H. Draper

MALCOLM CLEAR  
Mr. & Mrs. Herbert A. Barrett  
Mr. Lew M. Evans

MRS. LUCILLE CLELAND  
Mr. & Mrs. Robert L. Horton

BEN THOMAS CLEMENTS, SR.  
Linder Industrial Machinery Co.

MRS. MAURINE CLEMENTS  
Mr. Joel R. Clements

STEPHEN CLEMONS  
Century Construction Corp.

THOMAS GLENN CLEMONS, SR.  
Mr. & Mrs. P. H. Roberts

EVAN CLIFTON  
Mr. & Mrs. Joseph Tutone

FRANK CLINE, SR.  
Mr. & Mrs. J. F. Hollingsworth

MR. & MRS. CHARLES CLOUSE  
Mr. & Mrs. Edward A. Clouse

HAROLD A. COATES  
Mr. & Mrs. Frank Houlihan

DEP. SHERIFF LONNIE COBURN  
Ms. Helen A. Nangle  
Mr. Louis Huffmann  
Mr. & Mrs. Hale Daniel

A. COCHRAN  
Mr. Albert Tritschler

HOWARD COLBERT  
Mr. Andrew Colbert

CARL E. COLE  
Mrs. Phyllis Hargrove

MRS. ELSIE COLE  
Mr. & Mrs. W. C. Pfaff  
Mary Bidwell  
Mr. & Mrs. C. W. Dunbar  
Mr. & Mrs. W. F. Epps  
Charlie Wilder  
Virginia H. Temple

BARBARA COLEMAN  
Mr. Wilfred C. Varn

BEULAH F. COLEMAN  
Mrs. Ivey Futch

LILA COLES  
Mr. & Mrs. W. L. Bunce

MISS HEATHER COLLINS  
Mr. & Mrs. Wallace Storey

MRS. JEAN COLLMAN  
Mr. & Mrs. C. R. Dolnik

JAMES COLTON  
Mr. Richard L. Colton

LUTHER L. COLTON  
Mrs. Lois G. Colton  
Mr. Richard L. Colton

ALTON COMBS  
Mrs. Ethel Combs

GEORGE H. COMBS  
Mr. Herbert F. Frieman

DR. BYRON H. COMSTOCK  
Mr. & Mrs. Don Howell and David

WALTER M. CONARD  
Mr. & Mrs. Frank W. Corse  
Mary Louise Kincaid  
Neighbors of Waverly Towers

ROBERT W. CONKEY  
Mr. Guy E. Conkey, III

MR. & MRS. B. T. CONRAD  
Mrs. Alistair Baikie

DANIEL J. & HELEN E. CONSODINE  
Mrs. Nada H. Brugger

ALVIN COOK  
Mrs. J. M. Coleman

MRS. GRACIE LEE COOK  
Mrs. J. M. Coleman

R. W. COOK  
Mr. & Mrs. Don Yeats

COL. JOSEPH COOKE  
Mr. & Mrs. P. Stopenhagen

JOSEPH E. COOLIDGE  
Mr. & Mrs. A. C. Johnson

EVA T. COON  
Mr. Laurence R. Coon

NINA P. COONEY  
Mrs. William E. McGrath

HELEN K. COOPER  
Mr. Homer S. Cooper

JOSEPH M. COOPER  
Mrs. Dorothy H. Cooper  
Joe Ann J. Holland  
Mrs. Margaret C. Jackson

N. L. COOPER  
Mrs. N. L. Cooper

JUDGE FRANK COPE  
Mr. & Mrs. A. A. Anderson

ALTON B. COPELAND  
Mrs. Claire M. Harris

MR. & MRS. JAMES A. CORNWELL  
Mr. & Mrs. Johnnie Stamey

ARTHUR CORRY  
Mr. & Mrs. Dave Greenwald  
Mrs. George W. Munroe

J. FRANK COSTINE  
Mrs. J. F. Costine

WYLEY J. COULTER  
Mr. & Mrs. Wallace Storey

J. MEDERIC COUSINEAU  
Mrs. Doris F. Cousineau

KENNETH COUTTS  
Mr. & Mrs. Robert L. Coyle

MRS. JOSEPH H. COWAN  
Mrs. Mildred R. Rudio  
Mrs. Bernard Carrier

WILLIAM HENRY COWPERTHWAIT  
Mrs. Virginia C. Cowperthwaite

ELMER S. COX  
Mrs. S. M. Sharp

FRANK & EDNA COX  
Mrs. Frank Butcher

HARRY P. COX, III  
Mrs. H. P. Cox, Jr.

LT. COL. LESLIE T. COX  
Col. & Mrs. E. F. Gardner

ELIAS B. "BEN" COYLE  
Mr. & Mrs. Robert L. Coyle

H. GUY CRAMER  
Mr. & Mrs. C. R. Costlow

FLOYD CRAWFORD  
Mr. & Mrs. J. Palmer Purser, Jr.

ROBERT LON CREEKMOORE, JR.  
Mrs. Bessie B. Creekmore

OWEN M. CROOKE  
Mrs. O. M. Crooke

MRS. BLANCHE CROONQUIST  
Adult Social Club of Bartow

CLAUDE CROSBY  
Mrs. Mary E. Powell

GEORGE MAYES CROWDER  
Dr. & Mrs. Ben M. Crowder

NAT CROWTIZ  
Mr. & Mrs. A. H. Snell

W. L. CROWN, SR.  
Mrs. W. L. Crown, Sr.

FREDERICK D. CRUM  
Mr. & Mrs. Wesley H. Lees  
Mr. C. D. Clift  
Mr. & Mrs. Henry Enggren  
Mr. Paul E. Griesmer  
Mrs. Bryan Crutcher  
Mr. & Mrs. A. L. West  
Mrs. Frank Maddox  
Mr. & Mrs. John Albanese  
Mr. Walter Krieger & Jessie

ROBERT M. CULBERTSON  
Mr. Robert Collins

HUGH CULBRETH  
Mr. Roger L. Jones

GEORGE CUNNINGHAM  
Dr. & Mrs. Parker Towle  
Capt. J. C. Brinkley  
Mr. W. R. Ketchum, Jr.

HOWARD B. CUNNINGHAM  
Mrs. H. B. Cunningham

MARK ALLEN CUPPS, II  
Mr. & Mrs. Leo T. Sherman

A. B. CURLS, JR.  
Mr. & Mrs. Scott Linder

JEROME J. CURTIS  
Mrs. Jerome J. Curtis

**D**

E. B. DACTLER  
Mr. & Mrs. Steve Filimon

JACK DAILEY  
Mr. & Mrs. Frank Dailey

JOHN V. D'ALBORA, SR.  
Mr. & Mrs. Sydney O. Chase, Jr.

LOIS R. DALLERY  
Mrs. Lucille Rankin  
Mr. & Mrs. David Watford

MICHAEL H. DANA  
Mr. & Mrs. John Kushmer

IMOGENE DANGI  
Mr. Jim Dangi & Family  
Mr. & Mrs. J. Richard Dangi

JOHN H. DANIEL  
Mr. & Mrs. Leo A. Bray

MR. & MRS. MICHAEL DANZER  
Ms. Barbara Niess

FORD O. DARLING  
Mrs. Marilyn Darling Decker

MRS. MARGARET DARRAGH  
Mr. & Mrs. Sydney O. Chase, Jr.

HENRY W. DARROH  
Mr. Carey F. Carlton

OWEN DAUGHTREY  
Mrs. A. R. Bloodworth  
Mrs. Burnett Saunders

HENRY DAVIS  
Mr. & Mrs. W. N. Purcell

MRS. L. O. DAVIS  
Mrs. Alice T. Hughes  
Mrs. Lucille Leslie

MICHAEL CALVIN DAVIS  
Capt. Louis J. Modave

DR. ROBERT D. DAVIS  
Mr. Lynn J. Taylor, Sr.

MRS. RUTH C. DAVIS  
Mrs. Reba Lee Bryan & Children

ROBERT D. DAWSON  
Mr. & Mrs. Dan Autrey

MRS. RUTH DEAN  
Mr. E. Odell Carlton

EDITH A. DEARY  
Mrs. Mildred K. Neff

EDWARD DECKER  
Mr. & Mrs. William P. H. Dietz

FRANK DeDELIBERTO  
Ms. Eleanor D. Zeller

FATHER RICHARD ZEE  
Mr. Kenneth W. Zisler

DAVE DEEGAN, II  
The Edwin Rountrees

WILLIAM DEEN  
Miss Shep Cochran  
Sheriff & Mrs. P. A. Edmonson  
Miss Celia P. Lord  
Mr. & Mrs. Dale B. Brown, Jr.

MRS. SHIRLEY DELAND  
Mr. & Mrs. Sim L. Lowman

GIULIO ADA DELLA-CROCE  
Mr. Julius Della-Croce

EDWARD O. DENZLER  
Mrs. James G. Pierce

LUCIUS DERBY  
Mrs. Charles S. Boyce

MRS. FRANCES C. DETWEILER  
Mr. S. R. Detwiler

C. JOSEPH DEVLIN  
Mrs. Modelle E. Valentine

BASIL L. DEWITT  
Mr. & Mrs. L. C. Crandall

REBECCA DEWITT  
Mr. & Mrs. Leroy DeWitt

BUD DIEMER  
Mr. & Mrs. R. W. Weitzenfeld

MRS. ELIZABETH H. DIETZ  
Mr. & Mrs. Jay Starkey

MRS. MARY DILLHYON  
Mr. & Mrs. M. E. Harrison

JOHN J. DIPPEL  
Mr. & Mrs. William J. Green, Sr.

LUCY ELLEN DOBBINS  
The First National Bank of  
Kissimmee

DR. RICHARD DOBELEIT  
Timberlane Assoc., Inc.  
Mr. & Mrs. Glenn W. Marshall  
Peggy Robbins

ANSON DODGE  
Mr. & Mrs. Robert S. Hill  
Mr. M. R. Buckalew  
Mr. & Mrs. A. G. Stefurak

CHARLES A. DOLL  
Mrs. Joel B. McLean  
Mrs. L. C. Mitchell

POLLY GRAHAM DOLLAR  
Mr. & Mrs. Lamar Graham

NEAL DONAHUE  
Mr. & Mrs. Wallace Storey

MRS. JOHN DONNAN  
Mr. Henry M. Enterline

MRS. HARRY A. DONNELLY  
Mr. Fred P. Baeder & Neighbors  
Mrs. Eugene Rogers  
Mr. Morris N. Friedman

THERESE M. DORAY  
Chris Christensen & Peggy Shea

OSCAR L. DORSEY  
Mrs. Virginia T. Dorsey

DICK DORTON  
Mr. & Mrs. John Graham  
Mrs. Anne Williams

RICHARD LINDSAY DOTY  
Mr. & Mrs. L. E. Van Horn

TED DOUGLASS  
Mr. & Mrs. Harold Green

DAISY D'OYEN  
Mr. John L. D'Oylen

MR. & MRS. L. E. DOYLE  
Mrs. Marian D. Litrento

PAUL DRAA  
Ms. Helen S. Roumillat

CLEMENS DRACHE  
Mrs. Clara Drache

M. CRAWFORD DRENAN  
The Howard W. Rutans

GRACE DRENNAN  
Mr. Charles R. Stewart

JUSTICE E. HARRIS DREW  
Mr. & Mrs. R. C. Crooks  
Mr. R. B. Crooks  
Mr. & Mrs. Ray E. Green, Sr.  
Mr. & Mrs. John T. Wigginton

W. M. DUBOSE  
Mr. & Mrs. W. H. Folds

BARBARA DUBRIAN  
Ms. Dorothy Douglas

FRANK DUBRIDGE  
Mrs. Fay DuBridge

HAROLD DUEL  
Mr. & Mrs. Spencer A. Knutson

GALE DUGAN  
Mr. Paul W. Meyers

MRS. RENFRO R. DUKE  
Mr. & Mrs. Jim Quinn

JAMES V. DUNAHUE  
Mr. & Mrs. Johnnie Stamey

WILLIAM (BILL) DUNCAN  
Mr. & Mrs. Roswell Myers

MRS. EDNA V. DUNKELBERGER  
Mr. & Mrs. Harry N. Ingraham

MRS. R. P. DUNTY, SR.  
Mr. & Mrs. Ray Bassett  
Mrs. Agnes L. Crankshaw  
Mr. & Mrs. Robert Fitzgerald  
Miss Martha A. Lauderback  
Ms. Betty L. Maness  
Mr. & Mrs. J. C. Murdock  
Jack & Dale Saceman  
Mrs. Carolyn Sheppard  
Sheriff Joe Sheppard

MR. & MRS. DOW DURRANCE  
Mr. & Mrs. James Hughey

W. RALPH DURRANCE  
Mr. & Mrs. John J. Enzor  
Mr. W. R. Gooch  
Mrs. Lois Lennon

MRS. LILLIE DUTTON  
Mr. & Mrs. Chester H. Draper

JIMMY DYER  
Mr. James Sabetto

**E**

DONALD F. EASTHAM  
Elizabeth Ruder  
Forrest Graham

MRS. NELL EASTON  
Mr. & Mrs. E. F. McGrory

EMIL ECK  
Mrs. Emil Eck

JAMES EDWARD ECKEL  
Mr. Gerald B. Eckel

EDWARD F. ECKHARDT  
Mr. & Mrs. H. L. Griesbach

HARRY W. EDGE  
Mrs. Jessie A. Edge

WILLARD EDGERTON  
Mr. & Mrs. Elmer Dankert  
Mr. & Mrs. James Herefort  
Mr. & Mrs. Glen Houdak  
Mr. & Mrs. Clarence Pope

L. H. EDMONDSON  
Mr. & Mrs. G. L. Loggins, Jr.

CLARENCE EDWARDS  
Mr. & Mrs. Ben Myers

DOLAN EDWARDS  
Mr. & Mrs. William R. Bolton

OTHA M. EDWARDS  
Mrs. Dollie Edwards

BILL EGGERMANN  
Mr. Albert Damm

WILLIAM J. ELANDER  
Mr. Robert D. Hammock

SALLY ELBERT  
Mr. Ashley L. Wright

WILLIAM ELFO  
Mr. & Mrs. Fulton Gay

MRS. G. (MARTHA) ELLIS  
Ms. Agnes McGehee

MRS. ROSE EMMETT  
Mr. & Mrs. Samuel G. Oates

ANNA ENGELHARD  
Mrs. Eleanor B. Stucky

MR. & MRS. PETER ENGELHARDT  
Mr. & Mrs. Henry A. Englehardt

THOMAS ENNIS  
Mrs. Bertha Mae Ennis

FREDERICK S. ENTRESS  
Mrs. Georgiana D. Entress

MRS. MORSE EPSTEIN  
Mr. & Mrs. Vern Vineyard

REV. G. HENNING ERICKSON  
Mr. & Mrs. Ted Larson

HENRY L. ERMATINGER, III  
Mr. & Mrs. Elmer Ermattinger

MRS. TOM EUBANKS  
Mr. & Mrs. H. P. Hamrick

EVAN C. EVANS  
Mr. & Mrs. Don Howell

THOMAS E. EVANS  
Mrs. Rachel M. Evans

BLANCHE EVENSON  
Mr. O. C. Evenson

JOHN E. EWEN  
Mrs. Margaret W. Ewen

MRS. CECILE EYER  
Mr. & Mrs. Harry Kindred

FRANK EYMAN  
Mrs. Therese M. Eyman

**F**

NORMAN C. FALLIS  
Mrs. Clara Fallis

EDWIN DEWITT FAMBROUGH  
Mrs. Edwin D. Fambrough

CHANDLER FARMAN  
Mable F. Lane

PAUL R. FATIC  
Mrs. K. E. Fatic

OREN W. FAWCETT  
Mrs. Elva V. N. Fawcett

CAROLINE FELTON  
Mr. & Mrs. George Bartolomei

MARGARET A. FELTON  
Mr. Harry Felton

LEONARD E. FENN  
Ralph J. Watson

NELLIE FERDINAND  
Mr. Fred Greiner  
Mr. & Mrs. Paul Moore

MRS. CELIA FERGUSON  
Mr. & Mrs. Orrie Simonds

MRS. DOROTHY FERGUSON  
Mr. & Mrs. Clem Pearson

MRS. EDITH F. FERGUSON  
Mrs. Azel P. Barney

ALFONSO FERRANTE & SON  
Mrs. Doris Ferrante

J. J. FERRIS, JR.  
Mrs. Marie S. Wickham

CARL D. FETZER  
Charlie & Jackie Swigart

HARRY G. FICHT  
Mr. & Mrs. William Kashman  
Mrs. Edward K. Jones

MRS. DOROTHY FIERO  
Mrs. Edna B. Chapin

DON N. FILKINS, SR.  
Mr. B. A. Newsome & Family

ELIZABETH C. FINDLAY  
Mr. & Mrs. Louis Hetzel

ELSIE M. FINGER  
Mr. T. M. Kilgore, Jr.

DEY FINSTER  
Mr. Earl W. Redick

CLYDE A. (SKINNY) FITE  
Sara Hethcox Fite

LEONARD D. FITZGERALD  
Mr. & Mrs. Don Yeats

RICKY SCOTT FITZGERALD  
Mr. & Mrs. J. P. Fitzgerald

RONALD FITZGERALD  
Mr. Bernard G. Fitzgerald

STEVE FLACK  
Mr. & Mrs. Linden O. Franklin

MRS. HAZEL FLANIGAN  
Mr. & Mrs. Raymond Nelson

MRS. CLARA FLEMING  
Mrs. Eleanor K. Quinn

THOMAS J. FLETCHER, SR.  
Board Members of the Florida  
State Firemen's Ladies  
Auxiliary

DEPUTY EDWARD J. FOHL  
Mr. Roger H. Gibson  
Mrs. Samuel A. Gibson

KENSON G. & DANIEL F. FOLEY  
Mrs. William E. McGrath

JAMES A. FORBES  
Mrs. Mahana C. Forbes

MRS. STANLEY D. FORBES  
Mr. James K. Martin

HERBERT FORD  
Mrs. Byron Bushnell

CAROL TRIVAL FORFAR  
Mr. & Mrs. H. E. Trival

CHARLOTTE FORTCHER  
Mr. & Mrs. H. Gehring

LOYD FORTNEY  
Neighbors in Clearwater

CHARLES FOSTER  
Dr. P. K. Parsons  
Mrs. Mary K. Schaeffer

ERWIN JAMES FOUTZ  
Mr. & Mrs. Kirby Lane

HARRY FOX  
Charles & Uretta Miller

WILBUR S. FOX  
Mrs. Elizabeth Fox  
Mrs. Patricia Smith & Family

OSCAR FRAHLMAN  
Mr. Stephen A. Warde

MORTON FRANCIS  
Mr. & Mrs. Herman Koop

R. T. FRANKLIN  
Mr. & Mrs. William Sowers

HAROLD F. FREDERICKS  
Mr. & Mrs. Paul D. Price  
Mr. & Mrs. Roy Strickland

MRS. MADELEINE S. FREEMAN  
Oak Acres Addition Community  
Association  
Friends at Florida Power Corp.  
Mr. & Mrs. Jerry D. Hussey  
Mr. & Mrs. Raymond K. Jensen  
Lee County Bank  
Mr. & Mrs. R. M. Patterson  
Mr. & Mrs. John W. Potts  
Mr. & Mrs. F. K. Schoonmaker

MADELEINE S. & RAY E. FREEMAN  
Dr. & Mrs. Richard B. Patterson  
Mr. & Mrs. Don P. Lazenby  
Mrs. Robert A. Vest

F. LEE FRESH  
Mr. & Mrs. Don Genung

OSCAR FRICK  
Mrs. Frieda Frick

CLARIECE FRIERSON  
Mr. & Mrs. Don Yeats

EDWARD FROMWILLER  
Mrs. Mildred P. Fromwiller

I. CARL FULLER  
Mrs. I. Carl Fuller

MARTIN H. FULLER  
Mr. Lucien N. Hudson

MRS. MYRTLE D. FULLER  
Alma & John Davis

MRS. ELLA FULLERTON  
Mr. & Mrs. W. K. Small

L. G. FULTZ  
Mrs. Harold Bedford

SAMUEL LAWSON FURGASON  
Mrs. Jo S. Furgason

MICHAEL J. FURLONG  
Mrs. Alice E. Furlong

## G

HAZEL GABEL  
Mr. & Mrs. Spencer A. Knutson

JANE A. GAGE  
Mr. Sidney L. Gage

LYMAN L. GAGE  
Flora E. Gage

ADDARENA GAMBLE  
Mr. & Mrs. Frank Mulhern

CHARLES GANTT  
Mr. Carey F. Carlton

MARY DIXON GARDNER  
Mr. & Mrs. James W. Barker

MRS. HILDA GARLAND  
Mr. W. H. Garland

REASON GARRISON  
Mrs. A. Hammel

MRS. FLORENCE GARVIN  
Mrs. Lucille Leslie

OSCAR GAST  
Mrs. Hazel J. Gast

HARLEY D. GATES  
Diane Benedetto  
Ms. Harriette A. Gates

GEORGE GEDDES  
Dr. Jerry W. Blackmer

HATTIE SUE BROWN GEHRKE  
Mr. & Mrs. Don Yeats

ADELE GEIPEL  
Mr. & Mrs. Walter Blass

MRS. HELEN GELLER  
Mr. & Mrs. Gilbert F. Bond

CLARENCE GENTZEN  
Mrs. Stella Caldwell

MRS. MIMI GENUING  
Mr. & Mrs. Michael H. Doherty

CHRIS GEORGE  
Mrs. Cecelia George

PAUL W. GEORGE  
Miss Clara A. George

ROBERT G. GEORGE  
Mr. & Mrs. H. H. Avant

ROBERT H. GEROW  
Mrs. Elizabeth Booth Gerow

HARRY GERSON  
Mrs. Pauline Gerson

JANE LEWIS GETTEMULLER  
Mr. George D. Gettemuller

FREDERICK A. GETZ  
Mr. & Mrs. August F. Getz

VINCENT (JIM) GIANNUZZI  
Mr. & Mrs. Gus Roeder

MILDRED GIBBONS  
Mr. & Mrs. Peter Becker  
Mrs. Anne W. Poindexter

WILLIAM GIBSON  
Mrs. Robert Butler

ARTHUR O. GIERKE  
Bern & Evie Christensen

MRS. FRIEDA GIESE  
Mrs. Ingeborg Giese Lorenzen

R. K. GILBERT  
Mrs. S. M. Sharp

WALTER S. GILBERT  
Mrs. Walter S. Gilbert

CARLOS GILL  
Mr. & Mrs. J. A. Russell

CORRINE GILLEN  
Mr. C. H. Draper

W. DON GILLESPIE  
Mr. & Mrs. Alfred R. Clark  
Mrs. W. D. Gillespie  
Mr. & Mrs. William D. Jackson  
Mrs. W. J. McCarthy

MANDY GILLIS  
Mr. & Mrs. William J. Sharpe

JOHN R. GILMARTIN  
Mr. & Mrs. James J. Roessle

PAUL GILMORE  
Mrs. Paul Gilmore

CLARENCE GILPIN  
Miss Doris Gilpin

VINCENZA GIORDANO  
Mr. Joseph Giordano

GERALD GIVENS  
Mrs. Gerald Givens

HARRY GLADSTONE  
Mr. & Mrs. John F. Pelot

MRS. TERRY JOHNSON GLASS  
Mrs. Charles A. Harris, Sr.  
Mr. & Mrs. Max C. Greigg

MRS. E. C. GLENN  
Mr. & Mrs. Don Howell &  
David

MISS ALICE GLOVER  
Mr. & Mrs. E. E. Melton

MARTIN GOEHRING  
Mr. & Mrs. Arthur Rushbrook

MRS. GOHDE  
Mr. & Mrs. Albert Tritschler

GERALD GOULDRUP  
Mrs. Dorothy Gouldrup

MISS BERTA GRABINSKI  
Miss E. Beloch

GEORGE W. GRAHAM  
Mrs. G. W. Graham  
Mrs. Marguerite D. Graham

BERNARD W. GRANT  
Mr. & Mrs. T. J. Shook

JOHN G. GRAVLEE, JR.  
Mrs. John G. Gravlee

LILLIAN JERUSALEM  
GREENBAUM

MRS. MILDRED I. GREENE  
Mr. & Mrs. R. E. Amoss

Mr. Herman Greenbaum

JEROME D. GREENEBAUM  
Mrs. J. D. Greenebaum

MRS. EDNA FAYE GREER  
May & Orrie Simonds

MRS. MATILDA GREINER  
Mr. & Mrs. Fred Greiner

MRS. MERLE GREISEN  
Mr. & Mrs. John T. Wade

ALFRED GRENIER  
Mr. & Mrs. Charles O. Reid

WILLIAM F. GREY  
The Robson Family  
Mr. & Mrs. A. H. Snell  
Mr. & Mrs. Henry Potter  
Mr. & Mrs. Frank Potter  
Mrs. Frank Ellis  
Mrs. H. L. Crutchfield  
Ms. Nan LeFils Balogh  
Mr. & Mrs. John Evans  
Mr. & Mrs. W. Gary Parnell  
Mr. & Mrs. E. T. Etter  
Ellis First National Bank  
Mr. & Mrs. R. W. Huddleston  
Richard, Booth & Martin

SIMON GRIFFIN  
Mr. & Mrs. Chester D. Downing

LOUIS GRUBER  
Mr. Anton Prelec

MRS. MARY GRUBER  
Mr. Anton Prelec

VIRGINIA ELIZABETH GUERNSEY  
Mrs. Sidney Smith, Jr.  
Tucker & Branham, Inc.  
Mr. & Mrs. R. T. Tucker  
Margaret & Elizabeth Leps  
Mr. & Mrs. J. Walter Tucker, Jr.  
David Weeks  
J. T. Branham, Sr.

MR. & MRS. ROY GUESS  
Mr. & Mrs. David Pugh

CECIL B. GUINN  
Mrs. Cecil Guinn

GORDON W. GUNNING  
Mrs. W. C. Petry

EVELYN GUS  
Ms. Joyce Murry

HARRY GUTHRIE  
The Edwin Rountrees

JOHN A. GUY  
Mrs. Frank Butcher

## H

RALPH H. HABEN, SR.  
Mr. R. Ed Blackburn, Jr.

ROBERT CHARLES  
HABERKORN, JR.  
Mr. Percy B. Schaker

DR. JOHN D. HAGOOD  
Mrs. William H. Bryan, Sr.

JOHN F. HAHN  
Col. & Mrs. Frank T. Balke

O. E. HALE  
Mrs. O. E. Hale

CLYDE HALL  
Sheriff & Mrs. N. H. Murdock

CARL GEORGE HALLIN  
Mrs. Jeanne R. Hallin

IRVING HAMM  
Ms. Miona E. Baker

JOHN S. K. HAMMANN  
Mrs. John S. K. Hammann

E. W. HAMMETT  
Mr. & Mrs. James O. Rowe

RALPH M. HAMMOCK  
Richard A. Hammock

HAROLD H. HAMPSON  
Neighbors in Port Charlotte

WILLIAM P. HAMPTON  
Mrs. Frank Ellis

DAVID HAMRICK  
Hon. Don Fuqua  
Mr. & Mrs. Frank Branan, Jr.  
Mr. Thomas B. Dann  
Mr. Jimmy G. Eddins  
Mr. & Mrs. Robert B. Hill  
Mr. & Mrs. John T. Sewell, Sr.  
Ms. Corinne Stephens  
Mrs. Jack Stephens

MRS. BARBARA HANNA  
Mr. George J. Schammell

JOHN HANSEN  
Mr. & Mrs. Robert F. Dietz &  
Sons

Mrs. F. Eberstadt

LEONA M. HANSEN  
Mr. Henry Hansen

LOIS HANSEN  
Mrs. C. W. Wilson

WALTER C. HARBERT  
Mr. & Mrs. Eugene Winstead

ERNEST C. HARDESSEN  
Mrs. Coral Hardesen

CLEANORE TINKER HARDY  
Mr. & Mrs. H. E. W. Tinker

PAUL HARDY  
Mr. T. M. Kilgore, Jr.

ANNIE HARMS  
Mr. & Mrs. R. C. Dirk

J. KING HARNESS  
Mr. & Mrs. Robert E. Harris

MRS. JOAN HARPER  
Mrs. Grace W. Stone

MRS. IRVINE HARRELL  
Mrs. Hildred Y. Casey

MRS. REBECCA HARRELL  
Mr. & Mrs. W. N. Purcell

JOSEPH F. & JOSEPH L. HARRIS  
Mrs. Claire M. Harris

ED HARRISON  
Mrs. H. L. Crutchfield

R. D. HARSHFIELD  
Mr. J. L. Harshfield

AMY E. HART  
Mr. Herbert B. Hart

MRS. EVELYN HART  
Mrs. Millie W. Sampson  
Miss Martha Lauderback  
Mr. Broward Coker  
Mr. Jack M. Zeiss

EUGENE W. "RED" HARTUP  
Mr. & Mrs. Dick Hilliard

BRAINARD M. HARVEY  
Mr. Wilfred C. Varn

FRANK W. HASLAR  
Mr. & Mrs. Dan Autrey

HAROLD HASSETT  
Mr. Joseph C. Colombo

PETER HATAM  
Mrs. Martha Hatam

MRS. E. HAUPTKORN  
Mr. & Mrs. William Sowers

EVANGELINE HAWES  
Mr. & Mrs. Walter Blass

FRED HAWKINS  
Mrs. Fred Hawkins

MRS. NELL HAWKINS  
Mrs. Charles A. Harris, Sr.

STANLEY HAWKINS  
Mr. Arthur J. Dachroeden

M. L. HAYES, JR.  
Mr. & Mrs. Carl Carlton, Sr. &  
Family

MILDRED HAYES  
Mr. Herbert R. Hayes

MARGARET H. HAYNIE  
Mr. Wilfred C. Varn

HELEN HAZELTON  
Mrs. Marie A. Osborn

WILLIAM HEALD  
Ms. Faye Homrighous

PRICE HEARD  
Mr. & Mrs. Sydney O. Chase, Jr.

VIRGINIA BLACKBURN HEARN  
Mr. & Mrs. Ray Knipe

NESTOR HEBERT  
Mr. & Mrs. A. G. Stefurak

MRS. IDA HEBING  
Mrs. C. R. Cannon

WALLACE F. HEIDRICH  
Mr. & Mrs. Victor H. Heidrich

FLOYD B. HEIMER  
Mr. Ted C. Gardner

HOWARD G. HEININGER  
Mr. C. T. Baumgart  
Mrs. Donald Crabbe  
Dr. Lyle J. Filek  
Mr. & Mrs. H. F. Grevin  
Bishop & Mrs. Harold R.  
Heininger

Mrs. Howard Heininger

IBM Corporation

Mr. & Mrs. Frank Redman

Mr. & Mrs. B. W. Tharrington

ROBERT C. HELFERT  
Lewis & Mary Berry

V. B. HENBY  
Mr. & Mrs. Otis L. Browning

MRS. LILLIAN HENDERICKSON  
Mrs. Clarence Olt

GETTES HENDERSON  
Mrs. T. W. McElvay

HERBERT HENDERSON  
Mr. Warren J. Frair

JOHN W. HENDERSON  
Mr. Walter Culley, Sr.  
Mr. John T. Wigginton  
Mr. Wilfred C. Varn

UEL HENDERSON  
Mr. & Mrs. Jack L. Smith  
Mrs. Floyd Smith

JOSEPH B. HENDRY, SR.  
Mr. & Mrs. W. B. Barron

MAMRY E. HENDRY  
San Pedro Bay Sportsman Club

MRS. CLARA HENNING  
Mr. & Mrs. Vern Vineyard

GORDON A. HENRY  
Mrs. J. W. Thomas

KENNETH HENRY  
Mr. & Mrs. R. E. Thomas

MILDRED L. HENSLER  
Bob & Terry Olsen

MRS. R. H. HERBERT  
Mrs. W. L. Dunlop  
Mary A. Foster

ELMER R. HERING  
Mrs. Otto Haag

STANLEY N. HESLOP  
Mrs. Stanley Heslop

IVEY HESTER  
Mr. & Mrs. Myron Johnson

MRS. THELMA HEWETT  
Mrs. Gordon F. Palm

JACK HEWITT  
Mrs. Jack Hewitt

ROY F. HICKS  
Mrs. Frances O. Hicks

RAYMOND A. HIEBEL  
Mr. Charles E. Knight

MRS. HELEN HIEF  
Mrs. La Veta S. Simmons

JOSEPH J. HIGGINS  
Mrs. Joseph J. Higgins

HARRY B. HIGHSMITH  
Mrs. Harry B. Highsmith

MRS. ANN HILL  
Mr. & Mrs. Sydney O. Chase, Jr.

CORRINE McPHAIL HILL  
Mr. & Mrs. Phillip H. Roberts

PETER E. HILL  
Mrs. Peter E. Hill

DORIS HIMES  
Mrs. Gordon Cowles  
Mrs. Ray P. Grapsy  
Mr. Frederic R. Hamil & Family  
Hortense A. Keller  
Dr. & Mrs. Donald D. Posson  
San Remo Shores Women's Club  
Mrs. Gladys M. Waitt  
Mrs. Denzil G. Perkins, Sr.

MARVIN HIMMELHEBER  
Mr. & Mrs. William Sowers

MRS. IDA M. HINDEILY  
Mrs. Leon Rothenberg

MRS. CAROLYN HINES  
Mr. & Mrs. Ariand McCall

E. W. HINSON  
Mr. & Mrs. L. M. May  
Mr. Grinelle Bishop  
Sheriff & Mrs. W. A. Woodham  
Mr. Atlas P. Shelfer

MRS. PEARL HINSON  
Miss Susie N. Smith

OSCAR W. HIRSHFIELD  
Mr. & Mrs. Herman Koop

MRS. LAURA HOCKEN  
Mr. L. L. McKay

DR. J. J. HODGES  
Mr. Charles H. Lane

ALEX M. HODGSON  
Mrs. Isabel B. Hodgson

CHARLES HODGSON  
Mrs. J. C. Jackman

REV. HAROLD HOEFLINGER  
Ms. Gayle Naas

WALTER W. HOFFMAN  
Mr. & Mrs. Tony Dell

KURT O. HOHNE  
Mrs. Grace L. Dixon

ELLIS HOLBROOK  
Hillcrest Memorial

WILLIAM E. "BILL" HOLLER  
Mrs. Cora S. Holler

MRS. MYRTLE PEARL HOLLETT  
Ms. Fern Minter & Bob Carr

VERONICA HOMETOWSKI  
Eleanor K. Quinn

MRS. SARAH HOOD  
Jay & Blanche Starkey

MRS. MADGE EDITH HORNBECK  
Tony & Phil Walker

CHARLES & SOPHIA  
HORSTKOTTE  
Lt. Col. & Mrs. Charles L. Lane

CLAUDINE HOSFORD  
Sheriff & Mrs. P. A. Edmonson  
Lawrence, Celia Joyce &  
Amanda Oliver

Mrs. Carol J. Smigielski

ELIZABETH HOSKINS  
Mrs. Dorothy W. Kurz

SALLY TILDEN HOSTER  
Mr. & Mrs. Vern Vineyard

WILMER HOUGH  
Mrs. Mildred Shore  
Mrs. D. W. Pate

ERNEST V. HOULT  
Mrs. Lillian Hoult  
& Friends  
Ms. Aldea Lagueux  
Josie V. McCarell

MRS. ANNA MAE TALLEY HOUSE  
Mrs. Mary Jo Fleming

C. B. HOWARD  
Mr. & Mrs. Jess Yarborough

VIRGINIA HOWARD  
Ms. Miona Baker

MARGARET HOWE  
Mr. & Mrs. Laurel Bunce

JEAN A. HOWELL  
Mr. & Mrs. Herman Koop  
Mr. & Mrs. H. R. Vitense

MISS BILLIE HOWINGTON  
Mrs. W. E. Hamner

NELSON P. HOWLAND  
Mrs. Nelson Howland

PEGGY HUEBSCH  
Mr. & Mrs. J. D. Cottrell,  
Kevin & Leigh

ANTON HUFNAGEL  
Mrs. Theresa Hufnagel

CHARLES L. HUGHES  
Mrs. Clara H. Hughes

MAJOR KENNETH E. HUGHES  
Mrs. Kenneth E. Hughs

JOHN B. HUGLEN  
Mr. & Mrs. Alvin Kvale  
Mr. & Mrs. R. K. Lysio  
Mr. & Mrs. Clarence Karlgaard  
Mr. & Mrs. Jarh Hanson  
Mrs. Anne E. Bausback

HENRY H. HULL  
Mrs. Henry H. Hull

M. LAIR HULL  
Mrs. M. Lair Hull

FRED HULSEN  
Mr. Frank Berdar

WARREN P. HUNNICUT, SR.  
Mr. & Mrs. W. N. Purcell

HERMAN HUNT  
Mrs. Herman Hunt

DR. W. L. HUNTER  
Mr. & Mrs. W. G. Hendricks  
Margaret L. Poole  
Mrs. Jean M. Hamrick  
Mr. Wallace W. Scoville

J. KENNETH HUNTINGTON, SR.  
Mr. John A. McCabe

WALTER MOTT HUPFEL  
Mr. & Mrs. Jack Whitticar  
Mrs. Richard H. Peter

DR. ROY M. HUTCHISON  
Mr. & Mrs. Jack Madigan

WILLIAM EDWARD HUTCHINGS  
Mr. & Mrs. Walter B. Hutchings

L. R. HUTTER  
Mrs. Lillian E. Hutter

BUREN HYDE  
Linder Industrial Machinery Co.

SUSAN LOUISE ISAACS  
Dr. & Mrs. Ivan Isaacs  
ROGER E. ISLEIB  
Mrs. Roger E. Isleib

## J

CHARLES H. JACKMAN  
Mrs. Elizabeth Craig  
MRS. RHODA JACKSON  
Mr. Carl A. Moore  
AUDREY LAMB JACOBS  
Mr. & Mrs. Charles V. Page, Jr.  
JACOB JACOBSEN  
Marie & Joe Slivon  
RICHARD JACOBUS  
Mr. & Mrs. H. W. Boylan  
IRA JAKES  
Mr. & Mrs. M. A. Frankewitch  
Miss Jean M. Holmes  
Mr. & Mrs. Bernard Richter  
SIGMUND J. JANAS  
Mr. & Mrs. J. Earl Steinhauer  
ANTHONY JANOSKY  
Mrs. Nellie F. Janosky  
Mrs. Berneta Reeser  
ROBERT JANOSKY  
Mrs. Pauline F. Janosky  
Mrs. Berneta Reeser  
REVA E. JANSSEN  
Mr. Edward A. Janssen  
O. S. (AUBIE) JEFFERS  
Boots & Dorothy Bulger  
Mr. & Mrs. E. W. Gilman  
Mr. & Mrs. Wilburn Lawson  
Mr. Robert F. Lowry  
JOHN JENKINS  
Mr. & Mrs. Ray E. Green  
JOSIE W. JENKINS  
Mr. Ralph G. Jenkins  
JERRY JENNINGS  
Charles Jennings  
JOHN L. JENNINGS, M.D.  
Mrs. Pauline Drake  
Mrs. Elefetheria Gianiotis  
MRS. ALICE HARLOW JEWETT  
Mr. & Mrs. Ralph L. Jewett  
CHARLES JEWETT  
Mr. & Mrs. E. H. Trent  
Mrs. Henry V. Beuttell  
Mrs. Charles C. Jewett  
Mrs. Doris J. Mortimer  
Miss Margaret Smith  
Pat O'Hara  
FRANK JIRETZ  
Mr. & Mrs. Don Yeats  
MRS. ROBERT JOHNS  
Mrs. Helen W. Wasmund  
Mr. & Mrs. U. S. Chapman  
ALBERT SIDNEY JOHNSON  
Ms. Martha F. Johnson  
CECIL PATRICK JOHNSON  
Mrs. Charles A. Harris, Sr.  
CHARLES A. JOHNSON  
Mr. & Mrs. LeRoy DeWitt  
DELLA JOHNSON  
Howard A. Maddox, Inc.  
E. C. JOHNSON, M.D.  
Jean Burns & Family  
Mrs. E. C. Johnson  
MRS. FRANCES E. JOHNSON  
Mrs. Mila D. Mahr  
MR. & MRS. FRED R. JOHNSON  
Mr. & Mrs. Echlin M. Kaake  
JESSIE M. JOHNSON  
Ms. Patsy Anderson  
Miss Josephine Pirtle  
Mrs. Martha Stargel  
MRS. MARJORIE JOHNSON  
Mr. & Mrs. Ava Gillis  
ODIS JOHNSON  
The Rivers, Lambs, Alfords &  
Chandlers  
COL. RANDALL JOHNSON  
Mr. & Mrs. Fred P. Hays  
Betty Hanyan  
HARRY R. JOHNSTON  
Mr. & Mrs. Carl Spence  
LUKE M. JOHNSTON  
Dr. & Mrs. Ivan Isaacs  
MRS. A. J. JONES  
Mr. & Mrs. William J. Sharpe  
AUBREY JONES  
Mr. & Mrs. Sam McDaniel  
C. B. JONES  
Mr. & Mrs. Hawley D. Blake  
DON R. JONES  
Mr. & Mrs. Aubrey L. Waff

GARY MARK JONES  
Mr. & Mrs. Julius Olchou  
DR. GUY JONES  
Mrs. W. B. Lewis  
Mr. & Mrs. Melvin Jones,  
Melanie & Melinda  
H. RUSSELL JONES  
Mr. & Mrs. P. L. Eide  
DR. HOWARD R. JONES  
Mrs. Howard R. Jones  
JAMES P. JONES  
Mrs. James P. Jones  
LEE B. JONES  
Capt. John A. Owens  
T. A. JONES  
William & Joyce Patrick  
THOMAS M. JONES  
Grace L. Jones  
MRS. CAROLYN JORDAN  
The Al Caton Family  
ALEX B. JORGENSEN  
Mrs. Pearl E. Jorgensen  
H. EUGENE JOSSELYN  
Mrs. Rose M. Josselyn

## K

TOY KARPPIENEN  
Mrs. Toy Karppinen  
CARL L. KAUFMAN  
Mrs. Lunetta A. Kaufman  
COL. EUGENE P. KAVANAUGH  
Mrs. Grace E. Kavanaugh  
PHYLLIS STOCKSDALE KAY  
Officers & Employees of The  
First National Bank of  
Kissimmee  
RENO R. KEAN  
Mr. & Mrs. Gerald Page  
JOHN H. KEENE, SR.  
Mr. & Mrs. Wilbur Olson  
KEVIN J. KEENEY  
Mr. & Mrs. Curtis E. Manford  
PAUL N. KEITH  
Major C. W. Keith  
MR. & MRS. WINSTON KEITH  
Mr. & Mrs. Robert Carpenter  
BARBARA KEITHLIN  
Mr. & Mrs. Don Genung  
Mr. & Mrs. Jack Madigan  
CHARLES ERIC KELLER  
Mr. P. J. Scotten  
JIM & ERIC KELLER  
Mrs. Cassie S. Keller  
JOSEPH RICHARD KELLER  
Mrs. Mildred Keller  
MRS. KELLER  
Mr. & Mrs. Don Genung  
BERTRAM KELLEY  
Mr. & Mrs. R. L. Martin  
BUNYAN KELLEY  
Mr. & Mrs. R. L. Martin  
MRS. MAMIE KELLEY  
Dorothy H. Clark  
THAD H. KELLEY  
Mr. & Mrs. Bill McCluskey  
DR. ODIS KENDRICK, JR.  
Dr. & Mrs. A. J. Henry, Jr.  
Mr. Wilfred C. Varn  
OLIVER KENDRICK  
Mr. Edward A. Kendrick  
HARRY KENNEDY  
Mrs. Susie Middleton  
VERSALOUS KENNEDY  
Ms. Alice M. Gale  
LOUISE KENT  
Mr. & Mrs. John Stankavage  
ELLEN KENYON  
Mr. Homer Kenyon  
JESSE L. KERCHOFF  
Mrs. Anna Kerchoff  
MRS. THOMAS C. KERLIN  
Jean & John Nelson  
Mr. & Mrs. R. H. Durbin  
WILLIAM F. KERN  
Mrs. Elizabeth Kern Nichols  
Mr. & Mrs. Raymond V. Purdy  
Mr. & Mrs. Henry C. Scott  
FORREST KESSLER  
Mr. & Mrs. Ray Clave  
The William Hierlihy Family  
JESSE G. KIBLER  
Mr. & Mrs. James W. Barker  
Mrs. H. A. Livingstone  
CARL H. KIEBUSCH  
Mrs. Carl H. Kiebusch  
LUCY C. KILMER  
Dorothy & Bud Hummel  
Mr. & Mrs. Albert W. Derrett  
Mrs. John M. Danitz

Mr. & Mrs. Walter R. Bialy  
Mr. & Mrs. William F. Miller  
Mr. & Mrs. Robert O. Krueger  
Mr. & Mrs. Herbert F. Rickloff  
Mr. & Mrs. Ray Sweetland  
Mrs. Laura K. Sefton  
John Knox Village of Tampa  
Bay  
JEFFREY KINARD  
Mr. & Mrs. Charles Neufeld &  
Kathi  
FRED H. KINDL, SR.  
Mrs. Mary R. Kindl  
BOB KING  
Chlotilde S. White  
WILLIAM H. KINSEL  
Mr. Olon J. Kinsel  
JOHN KIRALY  
Mr. & Mrs. W. G. Lee  
RICHARD J. KIRCHNER  
Mr. Harold E. Kilbey  
MRS. KIRCHDASSNER  
Mrs. Edith Herendeen  
KEVIN KIRKPATRICK  
Mr. & Mrs. Bud Torrence  
DEBORAH W. KITTREDGE  
Dorothy & Andrew Janes  
MARVIN J. KLIMA  
Larry Koelling  
Bob Viall  
Len Johnson  
Chris Tesnow  
FRED KLOPFER  
Dr. Lloyd Damsey  
SUE M. KLOTE  
Polk County Fertilizer Co.  
MRS. ISABEL G. KNAPP  
Mrs. Bertha Ashton  
JAMES H. KNIGHT  
Mrs. Robert H. DeBell  
WILLIAM J. KNIGHT  
Mr. & Mrs. J. E. Knight, Sr.  
BRUCE C. KNOWLES  
Mrs. Lucille Knox  
Mr. & Mrs. William Sowers  
RAYMOND C. KOCH  
Mrs. Raymond C. Koch  
RICHARD J. KOCH  
Mrs. Richard Koch  
DR. ALFRED KOENIG  
Dr. & Mrs. Edward V. Pollard  
GEORGE H. KOENIG, M.D.  
Mrs. Oma Lee Koenig  
DR. W. C. KOEPEK  
Mr. John B. Koepke  
LOUISE KOPP AND CHARLES J.  
KOPP, JR.  
Mr. Charles J. Kopp  
RALPH KRAETSCH  
Mrs. Gertrude Kraetsch  
MAE KRAL  
Mr. & Mrs. Spencer A. Knutson  
MRS. JOSIE L. KREPS  
W. A. & Keightley Stringfellow  
GENEVIVE DOROTHY KROLL  
Division of Public Safety,  
Ambulance Dept., Polk Co.  
C. F. H. KRUEGER  
Mrs. Adele L. Krueger  
FLORENCE KUBELAVIC  
Mr. Sam P. Kubelavic  
ROY KUFALK  
Mr. & Mrs. Douglas A. Dean  
PAULINE KUKIN  
Mrs. Edythe Sheridan  
ROBERT H. KUTTIG  
Mr. & Mrs. Robert Kuttig

## L

JOANNA LADIKA  
Mrs. Pauline Drake  
SAM LADLEY  
Mr. Nevin W. Ladley  
TIMOTHY J. LAFONTAINE  
Mrs. Ann LaFontaine  
CECIL LAMB  
Mrs. Jessie Lamb  
Miss Ruth McElya  
DWIGHT & JOE LAMBE  
Mrs. Dwight Lambe  
DOROTHY LAMBERT  
Mr. Ashley L. Wright  
FRANK LAMBERT  
Mr. & Mrs. Gordon R. Gerards  
GORDON LAMONT  
Mr. & Mrs. Arthur J. Brodrick

PENNY LAMONT  
Mr. & Mrs. Sam Heisler  
WILLIAM G. LAMONT  
Mrs. Marian P. Lamont  
OLGA K. LANCIANO  
Mr. George A. Lanciano  
IRVING W. LANDER  
Mrs. Walter M. Lander  
WALTER M. LANDER  
Mrs. Walter M. Lander  
GARY LANDY  
Mrs. Anna W. Benson  
NORMAN H. LANE  
Sheriff P. A. Edmonson  
RICHARD H. LANGFORD  
Mr. Jim Byrd  
Mr. & Mrs. Roy Gilbert  
Mr. Hector Johnson  
Ms. Edith Laurent  
Mrs. Asa Lewis  
Mr. Howard A. Maddox  
Mr. Carey F. Carlton  
DR. FRANCIS LANGLEY  
Mr. Frank R. White  
BOB LANKFORD  
Linder Industrial Machinery Co.  
IRVING H. LARKIN  
Mrs. L. Hattie Larkin  
NORMAN LARSON  
Mr. & Mrs. Ted Larson  
ANNE MARIE LASSMONN  
Mr. & Mrs. Robert G. Klos  
E. D. LATIMER  
Mr. & Mrs. Jay E. Latimer, Jr.  
AL LAUGHERY  
Mr. Ted C. Gardner  
ALEX & OLIVE LAURIE  
Miss Ann H. Laurie  
O. F. LAUTEN  
Mr. & Mrs. Henry C. Scott  
LOUIS A. LAVIANI  
Mrs. Minnie Laviani  
CLARENCE LAY  
Mr. & Mrs. Warren Alvarez  
Employees of Currency & Coin  
Dept., Federal Reserve Bank  
RICHARD C. LEATHERBURY, SR.  
Mrs. R. C. Leatherbury  
MRS. LILLIAN LEBER  
Mr. Herbert F. Frieman  
BETSY WHITE LEE  
Ms. Corinne Stephens  
LINDEN H. LEE  
Mr. Gordon D. Lee  
HERBERT LEES  
Mr. & Mrs. Harold Parks  
EMANUEL LEFKOWITS  
Mrs. Pauline Lefkowitz  
CHARLES LEIBUNDGUTH  
Mrs. Charles Leibundguth  
ANNA LEICHTWEISS  
Sophie Schweizer  
JOSEPH LEINHART  
Mrs. Helen E. Leinhart  
BERTHA LENDVED  
Mrs. Hal A. Livingstone  
HERBERT F. LEROY  
Mrs. Lillian T. LeRoy  
WILLIAM A. LEUBY  
Mr. & Mrs. Dan Autrey  
M. H. LEVSKY  
Mr. & Mrs. Don Yeats  
MRS. ADAM LEWIS  
Mrs. Mary J. Elebash  
EVA L. LEWIS  
Mr. George S. Lewis  
FRANCIS C. LEWIS  
Mr. & Mrs. Chester Downing  
LOUISE LEWIS  
Mrs. William C. Petry  
MRS. MARY LEWIS  
Mr. & Mrs. Francis Merrifield  
MRS. ROSALINE LEWIS  
Mrs. Lucy C. Claussen  
JAMES A. LEYDEN  
Mrs. James A. Leyden  
DR. MANUEL E. LICHTENSTEIN  
Mrs. Isabelle G. Lichtenstein  
Dr. & Mrs. Frank H. Fowler  
MARIO LINDELIE  
Mr. & Mrs. Clarence Pheil  
WILLIAM C. LINDT  
Mrs. Alene C. Lindt  
MRS. JOHN LINN  
Mr. & Mrs. Swen G. Webner  
ALFRED LISK  
Mary E. Carlton  
Ann Norvell  
Mr. & Mrs. Edward Whitaker

GEORGE LISSOWSKI  
Mrs. Maria Lissowski  
ROY L. LITCHFIELD  
Mr. & Mrs. Jack Stanley  
MADELEINE LITTLEFIELD  
Miss G. Muriel Parkes  
Mr. & Mrs. Arnold C. Wass  
JACK LLOYD  
Mr. & Mrs. Earlo Tanner  
Mr. & Mrs. James W. Barker  
WILLIAM J. LOCKETT  
Mrs. Margaret H. Gose  
SHON M. LOCKHART  
Mr. & Mrs. Harold E. Randal  
ROBERT O. LODMELL  
Mr. & Mrs. James W. Sweet  
EUGENE LODZIESKI  
Mr. & Mrs. Charles Ross  
SAUL LOEWENSTEIN  
Mr. John L. Storck  
MRS. LOFTON  
Dr. & Mrs. R. H. Martin  
MRS. EDNA LONG  
Dr. & Mrs. W. H. Hunn  
Mrs. John S. Cottrell  
Mrs. Cora Conway  
Mrs. Bettye Settle & Family  
Mrs. Ruby Simmons, David,  
Dinna, Bob & Barbara  
MRS. HAZEL LONG  
Mrs. Irene Schmutz  
JOSEPH F. LONG  
Mrs. Celeste L. Johnson  
RUTH ADAMS LONG  
Mrs. Frank Ellis  
EDWARD L. LONGLEY  
Mr. C. C. Layman  
LOU F. LOOMIS  
Mr. & Mrs. R. L. Givier  
Mrs. Avanelle Althar  
Mr. & Mrs. G. H. Givier  
Mr. & Mrs. L. A. Brubaker  
Mrs. Pauline Givier  
TOM LOOMIS  
Mrs. Hazel G. Wilcox  
Ms. Helen Lewis  
MRS. GRACE S. LORD  
Miss Celia P. Lord  
IN MEMORY OF LOVED ONES  
Mrs. Leah M. Frazer  
WILLIAM D. LOVELADY  
Ben & Cliff Moore  
COY L. LOWE  
Mr. Wesley N. Bakke, Sr.  
LULA LOWRY  
John L. Freeman  
MRS. NORAH LUDFORD  
Mr. & Mrs. Wilfred R. Cheshire  
DIDERICH LUNDE  
Mr. & Mrs. William P. H. Dietz  
JIMMY LUSK  
Mrs. Ted Cox  
MRS. MELVIN LUTEN  
Mr. & Mrs. Nixon Cox  
JOSEPH J. LYNCH  
Mr. & Mrs. Frank E. Forbes  
MISS NADINE LYON  
Mr. & Mrs. Sam McDaniel

## Mc

MRS. GEORGIA McALEER  
Mrs. Sherman H. Pace  
GRADY McALLISTER  
Mr. & Mrs. A. G. Stefurak  
MRS. RENA E. McALLISTER  
Carl & Mildred Pittman  
MARY C. McATEER  
Hazel McAteer  
RANDOLPH McATEER  
Mrs. Nellie I. Wright  
PATRICK McAULEY  
Mr. & Mrs. Charles O. Reid  
Mr. & Mrs. Jim Seymour  
KELLY McBRIDE  
Mrs. Ralph J. Roumillat  
WALTER McCABE  
Mr. & Mrs. Ray J. Knipe  
BESS McCASKILL  
Mr. & Mrs. F. E. Merrifield  
MATTHEW McCASKILL  
Mr. & Mrs. Jesse C. Barber  
MRS. DOSSIE McCRAWLEY  
Mrs. Charles F. McComic  
ERNEST K. McCLAIN  
Kendrick Methodist Church,  
Ocala

TOM McCLAIN  
Mr. Leon Tolar  
WILLIAM D. McCLINTOCK  
Mrs. Dorothy B. McClintock  
LUCILE J. McCCLURE  
Mr. Hugh W. McClure, Jr.  
MARY J. McCCLURE  
Mr. Hugh W. McClure, Jr.  
KEN McCONKEY  
Octagon Club of Lely  
GRAYCE MCCOY  
Ms. Annamary Botts  
Mr. Howard A. Maddox  
Harriet L. Rubel  
Mr. & Mrs. Alex J. Sabo  
THOMAS McCULLY  
Mr. & Mrs. Myron Johnson  
MR. & MRS. WILLIAM  
McCULLOUGH  
Mr. & Mrs. Leslie S.  
McCullough  
ELLA McDANIEL  
Mr. & Mrs. L. F. Williams  
MRS. FLOSSIE V. McDONALD  
Mr. & Mrs. Bill Albritton &  
Children  
LEONA C. McELWAIN  
Mr. W. V. Culley, Sr.  
ANN McGEE  
Mr. & Mrs. Gordon McGee  
BRUCE CYRUS McGLASSON  
Mr. & Mrs. Howard McGlasson  
FLORENCE & GENE McGOVERN  
Mr. & Mrs. V. H. Heidrich  
L. McGRATH  
Ms. Katherine McGrath  
WILLIAM E. McGRATH  
Mrs. Dorothy L. McGrath  
RILEY McGRAW  
Mr. & Mrs. Robert J. Clark  
JAMES W. McGREGOR  
Mrs. Marjorie DeShaw &  
Gayle  
JIM McINTOSH  
Mr. & Mrs. Russell Mumbauer  
JOHN W. McKETHAN  
Mr. & Mrs. W. N. Purcell  
Mr. & Mrs. Bobby N. Wilkes  
Mr. & Mrs. Raymond L. Carr  
Dr. & Mrs. Chan Springstead &  
Family  
Mr. & Mrs. R. Ed Blackburn,  
Jr.  
MRS. NELLIE B. McLAUGHLIN  
Major Clarence C. McLaughlin  
MRS. HELEN B. McLEAN  
Mr. Robert H. McLean  
Mr. & Mrs. William K. Shaffer  
HUBERT McLEAN  
Esther McLean  
NEILL T. McLEAN  
Mrs. Zaida M. Allen  
Henrietta Boyd  
Friedel & Dunny Roddey  
Mrs. Cedric H. Collins  
Mr. David R. Hicks  
Mr. & Mrs. A. W. McLean  
Mrs. Joel B. McLean  
Mrs. L. C. Mitchell  
Mrs. Louise R. McLean  
Mrs. Clarence G. Redman, Jr.  
Mrs. Shirley Deshong  
Ted and Vera Williamson  
E. E. McLEOD  
Mr. & Mrs. Wallace Storey  
MRS. ELIZABETH BURGESS  
McLUCAS  
Mrs. Mila D. Mahr  
ALVIN McMILLAN  
Mr. & Mrs. Robert Letch-  
worth  
MRS. G. STANLEY McMULLEN  
Mr. & Mrs. H. M. Kindred  
MRS. KATE McMULLEN  
R. C. McMullen  
MRS. LULA McMULLEN  
Mr. R. C. McMullen  
WHITEY McMULLEN  
Mr. & Mrs. Jay Jones  
ROY E. McMURRAY, SR.  
Mrs. Roy E. McMurray, Sr.  
ARTHUR McNAMARA  
Mr. & Mrs. George E. Hubbard  
MRS. McNEIL  
Mr. & Mrs. James F. Harrell  
WALTER McNEILL  
Mr. & Mrs. Scott Linder  
Mr. W. R. Ward, Jr.



DICK McPHERSON  
Mr. & Mrs. Jack Lewis

G. BRUCE McPHERSON  
Mr. & Mrs. Sidney T. H. Carlson

GEORGIA McPHERSON  
Florida State Firemen's Auxiliary

MRS. LUCY S. McRAE  
Mr. Walter Culley, Sr.

JAMES C. McROBERTS  
Mrs. James C. McRoberts

TED McWILLIAMS  
Mr. Arthur J. Kratochvil

## M

MRS. MARY BARBER MacBRYDE, JR.  
Mr. H. N. Joyce

CAPT. HOLLY MacDERMID  
Capt. & Mrs. M. E. Wade

ROBERT MADDEN  
Mr. & Mrs. J. E. Madden

JAMES MAGNUSSON  
Mr. & Mrs. Edward Knechel

GERALD MAHAFFEY  
Mr. & Mrs. R. N. Whitman

EVELYN MAHONEY  
Paul A. Mahoney

ROBERT MAILLIE  
Mrs. Carl W. Smith

I. W. MANLEY  
Mrs. Ella Manley

A. G. MANN  
Mrs. Augusta Durrance  
Dr. & Mrs. Thomas K. Blain  
Dan & Boots Autrey

MRS. A. G. MANN  
Dan & Boots Autrey

MR. & MRS. A. G. MANN  
Mrs. M. M. Overstreet  
Mrs. T. W. Miller  
Mr. & Mrs. Edwin H. Rohde

MRS. HAROLD MANN  
Mr. & Mrs. Emil Alexy

MRS. IDA MANN  
Miss Mariceva Thompson

MARGARET E. MANN  
Mr. & Mrs. L. R. Rice

CLIFFORD B. MANSFIELD  
Mrs. C. B. Mansfield

ROLAND E. MANTEL  
Mrs. Edward L. Harrison

COL. GUY F. MAPLE  
Mrs. Guy Maple

MRS. MARCHESSEAU  
Mr. & Mrs. A. A. Messler

JULE J. MARION  
Mr. Herbert F. Frieman

VIRGIL MARKHAM  
Mrs. Virgil Markham

SAM MAROTTA  
Mrs. Susan Marotta

BOYD E. MARR  
Mrs. Marguerite D. Marr

HAROLD MARR  
Mr. & Mrs. W. A. Gardell

MRS. NANCY MARR  
Mrs. Claire M. Harris

GEORGE MARSH  
Ms. Smilena Tomlinson

FLETCHER H. MARTIN  
Mr. & Mrs. F. M. Sumner

JULES A. MARTIN  
Mrs. Jules A. Martin

SHIRLEY JOAN MARTIN  
Mr. & Mrs. Albert Martin

M. H. MASLAND, JR.  
Mr. & Mrs. C. R. Horn

LOYD E. MASON  
Mr. K. E. Miller

ROBERT MASON  
Mr. & Mrs. Paul S. Neeld

HUGH MASSIE  
Mr. & Mrs. W. N. Purcell

JAMES W. MATHEWS  
Mr. & Mrs. Harold E. Randol

JOSEPH W. MATHEWS  
Mrs. J. W. Mathews

MRS. MARIAN MATTERN  
Mr. & Mrs. Arthur Rushbrook

BRUNO MAU  
Mrs. Leonard F. Olt

WILLIAM MAULE  
Mr. & Mrs. Luke Blair

MRS. MILDRED MAURY  
Mrs. Anne W. Poindexter

CHRISTINE R. MAXWELL  
Mrs. Lucille B. Stello  
Suzanne & Hank Vinson  
Mrs. Mamie Revell

GLADYS C. MAY  
Mr. & Mrs. Herbert W. Booth

CHARLES C. MAYHEW  
Mr. Walter V. Culey

J. FRANK MAYNARD, JR.  
Mrs. J. Frank Maynard, Jr.

MRS. LOUISA A. MAYNARD  
Dr. & Mrs. John P. Lee

BROOKS MAYO  
Mr. Billy Gooch

MRS. ETHEL MAYS  
Mr. & Mrs. Joe Lucal

MISS ETHEL MEANS  
Mrs. Leon Rothenberg

CLARENCE CHRISTIAN MEFFERT  
Ms. Berniece D. Gerig  
Mrs. Lloyd S. LaPrade  
Mr. & Mrs. C. E. Winston, Jr.  
Mrs. Nettie Camp MacKay  
Mrs. A. F. Marshall & Family

AL MEISTER  
Dr. & Mrs. Frank Fowler

LYDIA MELOY  
Mr. J. Charles Meloy

THOMAS LLOYD MELVIN, JR.  
Mrs. A. R. Matthews

JOHNNY MERCER  
Mr. Dale B. Brown

MRS. MARTHA MERCER  
Sheriff & Mrs. P. A. Edmonson

ANDREW MERKEL  
Mr. & Mrs. Don Howell & David

HOWARD METZ  
Mrs. Henrietta Metz

RICHARD E. METZ  
Mr. George B. Metz

ERNEST MEYER  
Mr. & Mrs. Alfred Lorenzen  
Mr. & Mrs. Arthur McDowell  
Mr. & Mrs. George Nanck

MRS. MARIE MEYER  
Mr. & Mrs. A. Lyle Poinsette

PETRUS W. MEYERINGH  
Mr. & Mrs. Arthur J. Brodrick

HENRY MEYN  
Marion Nilsen

JOSEPH S. MICHALEC  
Mrs. Josephine M. Michalec

FRANK L. MICHELS  
Mrs. Frank L. Michels

MRS. DORA MILES  
Mr. Oscar D. Wooten, Sr.

MRS. P. W. MILES  
Mrs. Alma L. Blake

FLORENCE O. MILEY  
Mr. William H. Miley

CHARLES O. MILLER  
Mrs. Charles O. Miller

EDDIE MILLER  
Ina P. Walsingham

F. N. MILLER  
Mrs. F. N. Miller

MRS. HARDING MILLER  
Mr. Walter S. Peebles

L. E. MILLER, JR.  
Mr. & Mrs. Stanley Warth

LESTER MILLER  
Mr. Herbert F. Frieman

MURIEL MILLER  
Mr. & Mrs. William VonGerichten

ROY E. MILLER  
Mr. & Mrs. N. Dreazen

TODD MILLER  
Mr. & Mrs. Joe Suttle

WILLIAM R. MILLER  
Paul & Theo Smith

ALICE MILLIMAN  
Mrs. Harry W. Cole

LT. MICKEY MILLIS  
Mr. & Mrs. R. Millis

MAY D. MILLS  
Mr. Robert D. Mills

ROBERT MILLSAP  
Mr. & Mrs. Spencer A. Knutson

MOTHER OF BETTY MIMS  
Mr. & Mrs. Don Genung

DR. JOHN MINNS  
Mrs. Warren Baird

ALBERT LEROY MITCHELL  
Employees of Gadsden Co. Sheriff's Office

FLOYD MITCHELL  
Mr. & Mrs. T. McPherson & Jeff

LEO MITCHELL  
Mrs. Emma H. Reilly

W. N. MOBLEY  
Mr. & Mrs. Henry G. Bailey

ANTONETTE MOCH  
Miss Charlotte U. Moch  
Victoria M. Moch

FRANK D. MOCH  
Mrs. C. L. Murdock

MARIE M. MOCH  
Victoria M. Moch  
Charlotte U. Moch

WILLIAM C. MOGER  
Mrs. Charles M. Knapp

BLYNN MOLLOHAN  
Mr. Dick Stem

JACK R. MONTE  
Neighbors in Holiday

MRS. WENDELL LOWELL MONTGOMERY  
Mr. & Mrs. Leonard R. Kaeser

S. BERTIL MONTIN  
Capt. & Mrs. M. E. Wade

EDMUND J. MONTRON  
Mr. & Mrs. Harold E. Randol

CHARLES L. MOORE  
Mrs. Rose E. Moore

EARL MOORE  
Mrs. Albert L. Guy  
Mrs. Frank W. Hudson

HUGO A. MOORHEAD  
Mrs. H. A. Moorhead

MARIE H. MORAIN  
Mr. Barne Morain

DORIAN MORALES  
Mr. & Mrs. R. S. Wilson

URBAIN MORES  
Mr. & Mrs. Hubert Weeks

RUFUS K. MORGAN  
Ms. Lana Waldrop

CHARLES MORIN  
Mrs. Alda D. Anderson

HUGH MORRIS  
Mr. & Mrs. Nixon Cox

MRS. JOHN MORRIS  
Mr. & Mrs. Wallace Storey

LOTTIE MORRIS  
Mr. D. H. Morris

RALPH P. MORRIS  
Mr. & Mrs. Glen Peters

MRS. CAROLINE MORRISON  
Mr. John L. D'Oyen

FRANK MORRISON  
Mr. & Mrs. George Weitzel

MAJOR HAL MORRISON  
Dr. & Mrs. Henry A. Kingsbury

Col. & Mrs. N. J. Wiley, Jr.  
Mrs. Paul Randolph  
Mrs. Beatrice Maxwell  
Mrs. H. F. Heye  
Mr. & Mrs. A. B. Harrison  
Mr. & Mrs. James Coachman  
Mrs. Sherwood B. Davidge  
Mr. & Mrs. Charles J. Palmer

WALTER C. MORRISON  
Mrs. Marjorie M. Smith

FLOYD N. MORTENSON  
Mrs. Helen L. Mortenson

LOWNDES D. MORTON  
Mr. & Mrs. Aubrey L. Waff

CLAYTON E. MOSHER  
Mrs. C. E. Mosher

MOTHER OF MRS. F. BANNISTER  
Mr. & Mrs. Harold Case

MOTHER OF MS. CATHERINE M. SCANNELL  
Ms. Catherine M. Scannell

RUSSELL M. MOYER  
Mrs. Mary E. Moyer

E. B. MOYLAN, JR.  
Mr. & Mrs. Jess Yarborough

WILLIAM C. MUELLER  
Mr. & Mrs. Ray Knipe

EVELYN L. MUESSIG  
Mr. James W. Muessig

MARILYN LEE MUFF  
Mr. & Mrs. Thomas Muff

WALTER M. MUHLHOFER  
Mr. & Mrs. Charles J. McGlave

SUSAN JEAN MULLER  
Mr. & Mrs. William F. Schwalbach

HARRY A. MULLIKIN, SR.  
Mr. Walter Culley, Sr.

AVELEY R. MUNNS  
Mrs. A. R. Munns

GEORGE MUNROE  
Dr. & Mrs. John Wilson  
Gadsden County Sheriff's

Auxiliary

PHILIP P. MURDICK  
Mrs. Helen S. Murdick

FRED L. MURDOCK  
Flora C. LaFace

J. L. MURDOCK  
Mr. & Mrs. T. W. Fielding  
Mr. & Mrs. Lonnie Curt  
Mr. Broward Coker  
Mr. Henry G. Bailey  
Anna Dee Catanzaro  
Lynda Beth Temperio  
J. L. Hudson  
Harriet Rubel  
Howard A. Maddox, Inc.  
Sheriff & Mrs. Joe Sheppard

ARTHUR L. MURPHY  
Mr. Walter A. Bredlow

WALTER MURPHY  
Mr. & Mrs. Charles B. Anderson, Jr.

EDWARD MUSBACH  
Mr. George Trepisc  
E. F. MYERS  
Mrs. Harriett H. Myers

MRS. TERESA MYERS  
Mr. & Mrs. L. Grant Peoples

C. T. NAGLE  
Mr. & Mrs. R. K. Whyte

HENRY NANARTOWICH  
Dr. & Mrs. A. Clinton McKinstry

ROBERT JAMES NEELY  
Mildred M. Neely

CLAUDE PARKS NEET  
Mr. Charles H. Lane

ALBERT M. NEITHERCOTT, SR.  
Mrs. Albert M. Neithercott, Sr.

CHARLOTTE A. NELSON  
Mr. & Mrs. W. F. Mursch  
Mr. P. S. Neeld

IRENE NELSON  
Mr. & Mrs. William Velutz

COL. WILLIAM P. NESBIT  
Mr. & Mrs. M. R. Kerns

MARION NETTLETON  
Mr. & Mrs. B. Perkins, Jr.

MARIAMME M. M. NEWBOLD  
Mr. Clement B. Newbold

AUNT VILLA NEWMAN  
Mr. Charles G. Newman

LESTER W. NEWTON  
Mr. John A. McCabe

V. M. NEWTON, JR.  
Mr. & Mrs. Ed Blackburn, Jr.

WILLIAM HARRISON NEWTON  
Mr. & Mrs. John P. Newton

MRS. HENRY NICHOLS  
Mr. & Mrs. Glen Peters

WILLIAM F. NICKELL  
Mr. Warren T. Nickell

FORREST M. NICOSON  
Mrs. Lorraine L. Nicoson

LT. COL. RAYMOND NIEHAUS  
Mr. & Mrs. William J. Green, Sr.

COL. WALLACE E. NILES  
Mrs. Wallace E. Niles  
Mrs. Leonard F. Olt  
Col. & Mrs. N. J. Wiley, Jr.  
Mrs. Earl W. Willett  
Mrs. Greta S. Berendt

FREDERICK WILLIAM NIXON  
Mrs. Frederick W. Nixon

HELEN RUTH NIXON  
Mr. H. Del Nixon

MICHAEL RICHARD NOLAN  
Mrs. Isabel A. Ogle

HILGE NORDIN  
Charlotte County Sheriff's Department

GEORGE NORMAN  
Sheriff Clayton Williams

BURKE NORRIS  
Mr. & Mrs. Myron Johnson

SARA JANE NORRIS  
Mr. & Mrs. Earlo Tanner

FRANCES M. NORTH  
Mr. Michael A. North

J. R. NORVELL  
Mr. & Mrs. H. D. Mantz  
Mrs. H. F. Olmstead

ANDREW NOTARIDES  
Mr. George Notarides

MRS. HOPE NOVAK  
Mr. & Mrs. James F. Harrell

WILLIAM NOVAK  
Margaret M. Kuver

THOMAS E. NUNN, JR.  
Mr. B. G. Evans

FREDERIC LOUIS NYSTROM  
Mr. John A. McCabe

## O

CHARLES OBERT  
Mr. & Mrs. Joseph Markert

PAT O'BRIEN  
Mr. & Mrs. Harold E. Randol

ROBERT D. O'BRIEN  
Mr. & Mrs. Robert Letchworth

DR. NORMAN M. OGILVIE  
Mr. & Mrs. Thomas Little

EFFIE OGLE  
Mr. & Mrs. Harold Wilcox

ARTHUR F. OHNING  
Mrs. Arthur F. Ohning

LAWRENCE OLIPHANT  
Capt. & Mrs. M. E. Wade

W. ROBERT OLIVE, SR.  
Mr. Fred O. Dickinson, Jr.

LOUIS OLIVIER  
Mr. John L. D'Oyen

BETTY C. OLPIN  
Mr. Alexander J. Olpin

CLARENCE OLT  
Mrs. Clarence Olt

LEONARD OLT  
Mrs. Alan J. Jerome

AXEL ØRREGAARD  
Jens H. Christensen & Peggy Shea

DR. JUDY WARNER OSTER  
Mrs. Aksel Kristensen  
Mrs. Isabella Batson

J. E. OVERCASH  
Mr. & Mrs. George P. Perinis

## P

VERLEY PACETTI  
Mr. & Mrs. Don Yeats

K. L. PAINTER  
Randolph Tucker

DOROTHY PALMER  
Mr. Nelson C. Palmer

PETER PALTIN  
Mrs. Vera E. Paltin

STEPHAN PALYS  
Mr. Leo S. Paly

TONY PAPPAS  
Mr. & Mrs. George Nipper & Sons

EDWARD J. PARKER  
Mrs. E. P. Padrick

NICK PARLATORE  
Mrs. Josephine Parlatore

WILFRED PARRAMORE  
Mr. & Mrs. Nixon Cox

ROBERT L. PARSONS  
Mr. & Mrs. F. Earl Peppercorn

ROBERT F. PARTRIDGE  
Mrs. Cora P. Partridge

MRS. CLARENCE PASCOE  
Mr. & Mrs. Roy D. DeWitt

JOSEPHINE PASSMORE  
Mrs. Genevieve C. Mitchell

CLIFFORD PATTERSON  
Mrs. Florence Patterson

MRS. JESS I. PAVEY  
Mrs. H. F. Heye

HERBERT W. PEABODY  
Mrs. Rena M. Peabody

MR. & MRS. H. R. PEACH  
Mr. & Mrs. H. L. Sutphen

LEWIS PEACOCK  
Mrs. A. R. Matthews

DUKE PEARSON  
Mr. & Mrs. Edward Brown  
Mr. & Mrs. Glenn W. Bradley  
Mrs. C. C. Bidwell

COL. RICHARD W. PEARSON  
Mrs. Richard W. Pearson

EARL E. PEASE  
Arvilla M. Pease

STANLEY PEACARE  
Dr. H. Richard Carter  
Mr. R. C. McMullen  
Marion U. Taylor

LEON ROY PEEL  
Mrs. Marie Grace Peel

VINCENT PEEL  
The David Schneider Family

THOMAS A. PENDLETON  
Mr. James Houghton

CARLOS A. PEREZ-ARRIETE  
Mrs. Mercedes F. Perez-Arriete

HELEN PERKINS  
Mr. E. D. Gregory

SHUBERT V. B. PERPER  
Mr. Harold E. Perper

DOMINIC PERRISAUTE  
Ms. Chris Christensen  
Ms. Peggy Shea

CLIFFORD M. PERRY  
Mrs. Esther M. Perry

GEORGE PERZEL  
Katherine J. Stouffer

RAYMOND PETERSON  
Mr. & Mrs. Leon W. Noel

MRS. PAUL PFOHL  
Mr. & Mrs. Vern Vineyard

STUART N. PHILLIPS  
Mr. & Mrs. Carl Walden

HARRIET PHYPER  
Sheriff & Mrs. Joe Sheppard

MRS. VIOLA PIATT  
Mrs. Eleanor K. Quinn

PAUL PICKRAL  
Mrs. Jessie Augustine

EDWARD KARL PIEHL  
Mr. & Mrs. Lester Hamilton

C. BILL PIER  
Mr. & Mrs. R. W. Weitzenzfeld

JEAN VANARSDALL PIERSON  
Mr. & Mrs. William D. Beasley

ANN PIKE  
Mr. & Mrs. Roy P. Thomas  
Mr. & Mrs. Charles Stone, Jr.  
Mr. & Mrs. D. C. Scott  
Mr. & Mrs. J. Schill  
Mr. & Mrs. Ely Petersen  
Mrs. K. Ottendorfer  
Mrs. H. F. Olmstead  
Mr. & Mrs. John Moose  
Ms. Mildred Hempy  
Mr. & Mrs. R. A. Harkonen  
Mr. & Mrs. C. W. Goodwin  
Mr. & Mrs. Maurice A. Gardner  
Mr. & Mrs. Bill Dewson  
H. E. Center Family  
Bruce Center Family  
Broward Poppell Agency, Inc.  
Dr. & Mrs. H. C. McDermid  
Anna Miller Circle  
Mrs. Lillian Chevalier  
Mr. & Mrs. Emanuel Cachia  
Mr. & Mrs. William H. Baird  
Mr. & Mrs. Lyle B. Webb  
Mr. & Mrs. Henry Buchanan  
Mr. & Mrs. Daniel Hartsfield  
David L. Pfaff  
Mr. & Mrs. S. C. Franklin  
Mr. & Mrs. Jack T. Odom  
Mr. & Mrs. Jack Taylor  
Mr. & Mrs. Tinker Thomas & Family  
Mr. M. K. Whiddon  
Mr. & Mrs. Lawrence Willey

NEVILLE PILLING  
Mrs. Catherine M. Pilling

FLORENCIO PILOTO  
Mrs. Leonor Piloto

ALEXANDER PINCHINSON  
Mr. & Mrs. Harold Case

EDGAR PIPER  
Mr. & Mrs. C. A. Havlik

MRS. WILLIAM PIPKORN  
Mrs. Lyman P. Marden

ALICE B. PLANTZ  
Mr. Charles H. Plantz

ARTHUR PLATT  
Mr. & Mrs. Paul McDaniel  
Mr. & Mrs. Theodore Stout

KLINE PLATT  
Mr. & Mrs. Steve Houk  
Mr. E. L. Metheny

C. HOWARD PLUMSTEAD  
Mrs. Grace M. Plumstead

EUGENE POFFENBAUGH  
Dr. & Mrs. Donald Brown  
Mrs. L. E. Evans  
Mr. & Mrs. Dan Autrey  
Mr. & Mrs. Sherwood Brown

CORTLAND G. POHLE  
Mrs. Edward V. Mayer

**POLICE OFFICERS WHO GAVE A**

LIFE  
Mr. John R. Bower

**CLARENCE POLSTRA**  
Mr. & Mrs. William Sowers  
Mr. & Mrs. Chester D. Downing

**MRS. JANE L. POMEROY**  
Mr. & Mrs. Robert L. Coyle

**MRS. MAE PORCH**  
Mr. & Mrs. W. L. Martin

**SKIP PORTNER**  
Mr. & Mrs. Harold Case, Sr.

**KURT & ROSA PRENS**  
Mrs. Margo Rosen

**CHARLES M. PRESCOTT**  
Mrs. John M. Dorsey

**MRS. MAMIE PRESNELL**  
Mr. Robert L. Reynolds, Jr.

**DR. HARTLEY D'OYLEY PRICE**  
Mrs. Hartley D'Oyley Price

**JAMES H. PRICE**  
Mrs. Dorothy L. Phillippe

**JOHN M. PRICE**  
Mrs. John M. Price

**WARREN F. PRINCE, JR.**  
Genevieve K. Hiebel

**ARTHUR R. PRITCHARD**  
Mr. Claude E. Pritchard

**EDNA L. PROUT**  
Mr. John Prout

**ERNEST E. PURDY**  
Mr. H. L. Lawrence

**GUS PURVIS**  
Mr. Floyd Clemons & Ezra Tharp

**MYRTLE M. PURVIS**  
Mr. & Mrs. Albert E. Lord

**Q**

**DR. JESSE QUATSE**  
Mr. & Mrs. Luke Blair

**CARLETON QUINLAN**  
Mr. & Mrs. Frank Yesek

**JOHN T. QUINN**  
Mrs. Eleanor K. Quinn

**R**

**ANDREW J. RABBITT**  
Mrs. Andrew J. Rabbitt

**WALTER RABBITT**  
Mrs. Andrew J. Rabbitt

**RALPH A. RAE**  
Mrs. Ralph A. Rae, Jr.  
Mrs. Beatrice Rae  
Mrs. Alice Rogers

**W. A. RALEY**  
Mr. & Mrs. William S. Copeland & Family

**HERMAN RAMSEY**  
Mrs. Wilma J. Litten

**MATTIE B. RAMSEY**  
Mr. Chester H. Draper

**VELMA RANEW**  
Mr. & Mrs. J. D. Cottrell

**CORNELIA RAPP**  
Mrs. Rose Kaufmann

**MIKE RAPP**  
Mr. & Mrs. J. M. McAdams

**BETTY & JOHN RAUBOR**  
Mr. & Mrs. Robert Dunn

**ARTHUR RAULERSON**  
Sheriff & Mrs. D. C. Williams, Jr.  
Marian L. Crosby

**MILDRED M. S. RAUNICK**  
Mr. Irwin H. Raunick

**ELLENE A. REAVES**  
Mrs. Leola Dyer  
Mr. Fred Fussell  
Miss Alice C. Reaves  
Mr. & Mrs. Carl H. Holland  
Fayette J. Reaves  
Dr. Henry L. Reaves  
Mary Ellen Reaves  
Mr. & Mrs. Carl H. Holland

**MR. & MRS. W. I. REBER**  
Mr. & Mrs. Henry A. Englehardt

**FRANCES M. REED**  
Mr. & Mrs. Jay Starkey  
Marion U. Taylor

**A. L. (BERT) REES, JR.**  
Mr. T. M. Kilgore, Jr.

**LOUIS REESE**  
Mrs. Charles A. Harris, Sr.

**MRS. HAZEL REGER**  
Mr. Dick Stem

**ARTHUR REHME**  
Mrs. Arthur Rehme

**KERVIN D. REVELL**  
Mrs. Mildred C. Scaffie

**MR. & MRS. IRVING REYNOLDS**  
Mr. Kenneth W. Reynolds

**SHORTY REYNOLDS**  
Mr. Carl A. Moore

**PHIL RHODES**  
Mr. & Mrs. William Sharpe

**EMMETT RICHARDS**  
Mr. & Mrs. Frank E. Bryant  
Mr. & Mrs. Chester D. Downing  
Miss Martha A. Lauderback  
Howard A. Maddox, Inc.  
Sheriff & Mrs. Joe Sheppard  
Rachel & E. D. Treadwell, Jr.  
Ambra Kay & Robert R. Treadwell

**Sue & Daniel Ladd**  
Shirley S. Wack

**MRS. ETHEL RIDDLE**  
Mr. & Mrs. Chester D. Downing

**GENE RIDDLE**  
Golden Band Sunday School  
Class of the First Christian Church, Tampa

**J. S. RIDDLE**  
Mr. & Mrs. Carl Spence  
William C. Spence

**CHARLOTTE L. RILEY**  
Mr. Merrill K. Riley

**MRS. ISABEL RILEY**  
Mr. & Mrs. Roswell Myers

**PEG RILEY**  
Mr. & Mrs. Charles Schmidt

**WALTER RINGDAHL**  
Mr. & Mrs. Don Howell & David

**JAMES S. RISLEY**  
Mr. & Mrs. Sidney T. H. Carlson  
Capt. & Mrs. H. L. Marr

**ROBERT G. RISSE**  
Mr. W. D. Dewend

**ALVIE RITCHEY**  
Mr. & Mrs. N. B. Graybill

**FLOYD RITCHEY**  
Blount & Richardson, P.A.  
W. A. & Keightley Stringfellow

**WILLIAM RITCHIE**  
Mrs. William Ritchie

**CARLOS A. RIVEIRO**  
Mrs. Evelyn G. Friscia  
Mr. & Mrs. A. G. Spicola

**JAMES R. ROADS**  
Mrs. Carmen T. Roads

**MRS. HELEN ROBERGE**  
Mr. & Mrs. Horace Y. Buob

**MR. ROBERTS**  
Roy & Ann Gilbert

**CLIFFORD ROBERTS**  
Mr. Herbert Graffis

**KELLY ROBERTS**  
Mr. & Mrs. Charles Anderson  
Mr. & Mrs. James Hughey  
Mr. & Mrs. Jack L. Smith  
Mrs. Floyd Smith

**MARTIN ROBERTS**  
Mr. & Mrs. James Hughey

**WALTER R. ROBERTS, JR.**  
Camptown Industries of Florida, Inc.

**JOHN HARVEY ROBINSON**  
Mr. Dick Stem

**E. C. (ROBBIE) ROBISON**  
Mr. Eugene S. Bennett  
Mr. & Mrs. W. N. Purcell

**ALFRED HART ROBSON, JR.**  
Mr. & Mrs. Alfred Robson

**THOMAS O. ROCK, SR.**  
Mr. & Mrs. James A. Reilly

**DR. L. E. ROCKHOLD**  
Mr. R. C. McMullen

**MRS. LUCY THOMAS RODGERS**  
Mr. & Mrs. S. K. Potter

**FRED F. ROETTGER**  
Mrs. Mary Roettger

**IRVING ROGERS**  
Mr. & Mrs. William B. Leak  
Mr. & Mrs. Charles W. Breathitt  
Mr. & Mrs. John W. Shirk

**JOHNNIE LEE ROGERS**  
Florida State Firemen's Auxiliary

**MRS. W. N. ROGERS**  
Jewelle Bethea  
Mildred Burnam  
Graynella McLelland

**MR. & MRS. HERMAN ROHR**  
Mrs. Elsie B. McPherson

**ROBBY ROSEN**  
Mrs. Gladys Thomas & Family  
Mrs. Gladys Sullivan  
Mr. & Mrs. Robby Rosen  
Mr. & Mrs. Elly Petersen  
Mr. & Mrs. Wilbert Hansen  
Mr. Victor Backel  
Mr. & Mrs. E. B. Daves

**HOWARD ROSS**  
Mrs. Theodore French

**DR. RALPH ROSS**  
Mr. & Mrs. Don Genung  
Mrs. Louise Pelcher  
Mr. & Mrs. Thomas P. Keenan  
Mr. & Mrs. William D. Sexton  
Mr. & Mrs. Eric J. Stanley  
Mrs. Jean Theus

**ALFRED W. ROSSOW, SR.**  
United Brands Company

**LEON ROTHENBERG**  
Mrs. Ethel M. Creash  
Mrs. Leon Rothenberg

**DEWEY E. ROUSE**  
Lonnie & Mary Curl

**DR. FRED ROWAN**  
Mrs. Jeff Shelfer  
Mrs. Kenneth Maxwell  
Mr. & Mrs. Sam Solomon, III  
Mr. & Mrs. Joe Spitz

**IRVING R. ROWE**  
Mrs. Gladys Oberg

**BERNICE G. ROWLEY**  
Mr. Alfred E. Rowley

**RICHARD ROWLEY**  
Mrs. Richard Rowley

**MRS. T. J. ROWND**  
Mr. & Mrs. Preston Hardy

**RUTH RUDASILL**  
Sheriff & Mrs. Joe Sheppard  
Mr. Jack M. Zeiss & Family

**HARRY RUDICK**  
Mr. & Mrs. Julius Flemm

**RICHARD W. RUFF**  
Chester H. Draper

**RAY RUNZEL**  
Mr. & Mrs. Earle Paffrath

**MRS. HELEN RUSH**  
Mr. & Mrs. C. B. Stephens

**JACK W. RUSSELL**  
Mr. & Mrs. Keith Rusnell

**PAULINE RUTHEN**  
Mrs. Henrietta Metz

**MRS. A. RYAN**  
Mrs. Leon Rothenberg  
J. J. RYAN  
Mr. Keith Hudson

**S**

**BASILE G. SABA**  
Mrs. Julia A. Saba

**JOHN E. SACKER, SR.**  
Mrs. John E. Sacker, Sr.

**LUM E. "GENE" SADLER**  
Mrs. Lillian B. Sadler

**DR. CHARLES A. SALETTE**  
Dr. & Mrs. Frank H. Fowler

**MYRTLE SALISBURY**  
Mr. Elwin W. Salisbury

**DR. MARION SALLEY**  
Mrs. Anna Dee Catanzaro  
Mr. & Mrs. Charles D. Stidham

**JACK J. SALLY, SR.**  
Mrs. Henrietta E. Sally

**FRED C. SANBORN**  
Mrs. Fred C. Sanborn & Charlotte C. Sanborn  
Mr. & Mrs. R. H. Sanborn

**VIRGIL P. SANDERS**  
Mrs. Marjorie H. DeShaw

**GARY SANDY**  
Mrs. Anna W. Benson

**MRS. EFFIE W. SANFORD**  
Mr. & Mrs. L. M. May

**N. E. SANTAMOUR**  
Mrs. Ethel H. Santamour

**LACEY S. SATTERFIELD**  
Mr. & Mrs. Sumner Lowe

**TROY SCARBOROUGH, SR.**  
Dr. & Mrs. Chan Springstead  
Mr. & Mrs. Hale Daniel

**THOMAS DOUGLAS SCARFF**  
Mr. & Mrs. James I. V. Winland

**FRED M. SCHADE**  
Mrs. Mildred C. Schade

**KURT SCHARF**  
Mr. & Mrs. J. L. Hereford

**EDWARD SCHARFSCHWERDT**  
Mrs. Dale E. Jackson

**LEONA SCHAUB**  
Mr. and Mrs. Fred J. Hauser

**JOSEPH D. SCHEERER**  
Mr. & Mrs. Arthur J. Brodrick

**LEONARD L. SCHEIBEL**  
Mrs. Leonard L. Scheibel

**HARRY SCHLEUNING**  
Mr. & Mrs. Fred M. Waters, Jr.

**DELYLA SCHELM**  
Mr. & Mrs. Ray J. Knipe  
Mr. & Mrs. Leslie A. Davis  
Dr. & Mrs. Edward V. Pollard

**ROBERT SCHIELD**  
Mrs. Mary Leone & Family  
McGregor Garden Club  
Mr. A. B. Hummeland  
Mr. & Mrs. R. A. Shevitski  
Mr. William H. VanDuzer  
Mrs. H. B. VanDuzer

**GERTRUDE SCHLICHT**  
Mrs. Edith F. Morgan

**KATE SCHMIDT**  
Mrs. W. C. Petry

**ROBERTA ROLIFF SCHMIDT**  
Mr. & Mrs. John E. Carroll

**SIEBERT SCHNEIDER**  
Mrs. Hedwig Schneider

**HENRY W. SCHOOF**  
Mrs. Katherine F. Schoof

**CLYDE (LUCY) SCHROEDER**  
Florida State Firemen's Auxiliary

**MILDRED SCHROPE**  
Mr. Paul W. Schrope

**LEO SCHULZ**  
Mr. & Mrs. Jerry Herolt

**VERO LIBERO SCIPIONE**  
Mrs. Leonard Morelli

**LEWIS SCOGGINS**  
Dr. & Mrs. A. J. Henry, Jr.

**ARMOR G. SCOTT**  
Mary S. Hughes

**GERDON SCOTT**  
Mrs. Gerdon Scott

**MRS. MILDRED F. SCOTT**  
Mr. Wilfred C. Varn

**LAURELL L. SCRANTON**  
Mrs. Laurell L. Scranton

**EARL M. SEAGRAVE**  
Mrs. Earl M. Seagrave

**RICHARD W. SECOR**  
Mr. & Mrs. William P. Jubb  
Mr. Peter Secon Jubb

**WILLIAM SEELICKE**  
Mr. William Dietz

**EDWARD C. SEIBERT**  
Mr. William H. Hebb

**KENNETH SEIGLER**  
Mr. & Mrs. E. E. Melton

**EARL SELL**  
Mrs. Fred Bearden & Betty Calfee

**DANIEL SERVELLO**  
Mr. & Mrs. Henry Coengsen

**IRA SEVER**  
Mr. & Mrs. Howard L. Rousseau  
Mr. R. C. McMullen  
Marion U. Taylor

**MRS. ALMA C. SEVERTS**  
Trust of Clarence W. Severts

**WILLIAM C. SEVOR**  
Mr. & Mrs. Raymond Mercer

**H. E. SEWELL, SR.**  
Mrs. Etta B. Sewell

**MARIA SEXTON**  
Mr. & Mrs. Robert Letchworth

**ROBERT F. SHAFFER**  
Mr. Elmer S. House

**LOUIS H. SHAPIRO**  
Mrs. Jennie Shapiro

**H. C. SHARBAUGH**  
Mr. & Mrs. Arden B. Crowder

**DR. W. H. SHARPE**  
Mr. & Mrs. William J. Sharpe

**HOWARD M. SHAVER**  
Mr. & Mrs. Leslie E. Avant, Jr.  
Vera W. Bassler

**MRS. LILLIAN SHAW**  
Mr. & Mrs. Frederick Pierce

**VINCENT SHAW**  
Ms. Ruth E. Croll

**ARLENE SHEA**  
Mr. & Mrs. Dale Heideman

**JEFFERSON B. SHELFER**  
Mrs. Jefferson B. Shelfer

**NORMAN SHELTON**  
Ms. Isabel B. Eitneier

**MR. & MRS. W. C. SHEPARD**  
Mr. George Shepard

**JOHN R. (DUGAN) SHEPPARD**  
Mrs. Carolyn Sheppard  
Sheriff & Mrs. Joe Sheppard  
Mr. Leon Tolar  
Mrs. Ruth C. Vogt

**MICHAEL SHERIDAN**  
Mrs. Edythe Sheridan

**RALPH SHERMAN**  
Mr. Joseph Mukalla

**GERALDINE SHIELDS**  
Mr. John W. Shields

**WINIFRED SHINDELBOWER**  
Mrs. Ralph Hammock

**AUSTIN D. SHOARD**  
Mr. & Mrs. Jerry Hunt

**DICK SHOEMAKER**  
Mr. & Mrs. Joe Padgett

**MRS. RHEA COULTER SHOEMAKER**  
Mr. & Mrs. H. W. Craig

**W. W. SHORT**  
Mr. & Mrs. Howard L. Rousseau

**MRS. GWENDOLYN SHOTWELL**  
Mr. & Mrs. Charles D. Stidham

**WESLEY SHULTZ**  
Polk County Fertilizer Co.

**MASON E. SIGMUND**  
Mrs. Marie C. Sigmund

**MRS. EFFIE SIKES**  
Mr. & Mrs. Sherwood Brown  
Mr. & Mrs. U. S. Chapman  
Mr. & Mrs. John E. Carroll

**WALTER A. SIKES**  
Mrs. Julia Baker

**CHARLES H. SILER**  
Mrs. Virginia B. Siler

**LYNN L. SILVERTOOTH, SR.**  
Mr. Floyd L. Ziegler  
Mr. & Mrs. Francis H. Walpole  
Veterans Association/Field  
Mr. Eugene W. Bisel  
Boalt Insurance Agency, Inc.  
Dr. John S. Brooksbank  
Mr. & Mrs. Frank C. Brown  
Mrs. John B. Browning  
Ellis Sarasota Bank & Trust Co.  
Episcopal Thrift House  
Mrs. Robert L. Garrison  
Mrs. Patricia S. Gill  
Mrs. W. M. Harmon  
Mrs. Stanley T. Martin  
Mr. & Mrs. Jerry Harvey  
Ms. Mabel H. Hebb  
Mr. & Mrs. H. W. Booth  
Caroline Boylston  
Dorothy G. Boylston  
Mr. & Mrs. S. J. Jenster  
Mr. & Mrs. Taylor Green  
Mrs. James D. Harmon  
Mr. & Mrs. Chet Ihrig  
Mr. & Mrs. Elmer Ikerman  
Mr. & Mrs. A. W. Knapp  
Mr. & Mrs. K. H. Koach  
Mrs. Carnes Lee  
Susan and Walter Nimocks  
Mr. & Mrs. C. L. McKaig  
Mrs. Elizabeth R. March  
Mrs. Francis C. Millican  
Mrs. Ruth Molder  
Mr. & Mrs. Sidney R. Perry  
Mrs. Loring Raoul  
Mr. & Mrs. Charles A. Reiter  
Mrs. Dorothy Roth  
Mr. James D. Silvertooth  
Mr. & Mrs. Nevin Simmons  
Mr. & Mrs. Carlton Teate, Jr.  
Trawick, Griffin & Ferrell, P.A.

**FRANK & BILL SIMMONS**  
Chlotilde S. White

**MRS. S. Z. SIMONS**  
Mr. & Mrs. Wallace Storey

**HENRY A. SIMPSON**  
Mrs. Ruth J. Simpson

**MRS. MARION G. SINCLAIRE**  
Mrs. Thomas G. McFarland  
Mrs. Norman J. Allbright

**LEWIS (LEW) SKAGGS**  
Mr. & Mrs. Harry M. Kindred

**MISS MARY MATILDA SKIPPER**  
Mrs. Letta H. Reck

**CLAUDE SLATER**  
Mrs. Irene R. Slater

**MRS. B. L. SMITH**  
Mr. & Mrs. Jack Bowen

**BEATRICE SMITH**  
Ms. Anne E. Lindburg

**CARL W. SMITH**  
Mrs. Winifred McK. Snyder

**MRS. CARRABELL SMITH**  
Donald & Mary Holmes

**SON, SON-IN-LAW & TWO GRANDSONS OF MR. & MRS. FLOYD SMITH**  
Mr. & Mrs. Arland McCall & Family

**GEORGE W. SMITH**  
Ms. Smilena Tomlinson

**GRADY SMITH**  
Josephine, Betty, Lela, Jerry & Jeanie, c/o Ms. Vivian Bruckmeyer

**Mr. & Mrs. J. H. Nichols**

**HARRY M. SMITH**  
Mr. & Mrs. Harold Fowler

**HAZEL SMITH**  
Mr. Dale H. Smith

**MRS. HENRY C. SMITH**  
Mr. & Mrs. J. R. Wathen

**JAMES CHARLES SMITH**  
Mrs. Stewart C. Smith

**JOSEPH SMITH**  
Mrs. Mary S. Austin

**CAPT. KERFOOT B. SMITH**  
Mrs. K. B. Smith

**LANE SMITH**  
Mr. & Mrs. Glen Moore

**LILLIAN SMITH**  
Mr. & Mrs. R. T. Tucker

**PARENTS OF LOWELL SMITH**  
Mrs. A. J. Dickerson, Jr. & Family

**MALCOLM SMITH**  
Mrs. A. G. Sewell

**MARTHA BISHOP SMITH**  
Mr. & Mrs. Donald E. Bishop

**MYRTLE B. SMITH**  
Mr. & Mrs. Ernest W. Zane

**ROBERT SMITH**  
Mr. & Mrs. Alex Rotella

**MRS. ROY SMITH**  
Mrs. Arthur G. Smith

**THOMAS E. SMITH**  
Mr. H. N. Joyce

**TROY SMITH**  
Mr. & Mrs. Charles B. Anderson, Jr.  
Sheriff & Mrs. N. H. Murdock

**CLIFFORD SNEDEKER, SR.**  
Mr. & Mrs. Howard L. Rousseau  
Mrs. LeRoy Stucky

**JAMES M. SNOW**  
Mr. Ernest G. Hamberg

**ERNEST SNYDER**  
Mr. & Mrs. Leonard Gallatin

**MRS. SARAH SNYDER**  
Mr. & Mrs. Bob Bissell

**J. H. SODERQUIST**  
Mrs. J. H. Soderquist

**HARRISON "BUB" SOMERVILLE**  
Mr. & Mrs. J. Earl Steinhauer

**DR. CARL SOMMERFELD**  
Mr. & Mrs. Spencer A. Knutson

**EMIL SPAITH**  
Mr. & Mrs. Edward Canipelli

**MADGE A. SPITZER**  
Mr. M. D. Spitzer

**HOWARD C. SPLAN**  
The Marine Engineers & Wives  
Mr. & Mrs. Arthur Urdal  
Mr. & Mrs. J. Urdal LaBounty

**HELEN SPOONER**  
Juanita D. Croft

**JOHN M. SPOTTSWOOD**  
Mr. R. Stephen Merrill

**GEORGE SPRAY**  
Mr. David Williamson

**STETSON O. SPROUL**  
Mrs. Lillian Sproul

**LeROY N. STAFFELBACH**  
Adelheid Staffelbach

**WILLIAM H. STAFFORD**  
Mr. Carey F. Carlton

**H. B. STANLEY**  
Mr. & Mrs. H. R. Vitense

**GEORGE B. STANLY**  
Judge & Mrs. Bryan Simpson

**W. C. STARNES**  
Ms. Bonnie Albritton  
Mrs. H. Parnell

**GORDON STEDMAN**  
Mr. Charles Perry

**TED STEELE**  
Mr. & Mrs. R. L. Martin

**HENRY R. STEFFENS**  
Mrs. Dorothy L. Steffens

**M. DALE STEFFEY**  
Mr. & Mrs. Ed Blackburn, Jr.

ELLA STEINBRECHER  
Mr. & Mrs. Don Genung

CARL NASH STEINMETZ  
Ethel J. Steinmetz Trust

JOHN STEINFATT  
Mrs. Irene J. Peterson

HAROLD E. STELL  
Mrs. Mary E. Stell

S. F. STELLITANO  
Mrs. S. F. Stellitano

MRS. MARTHA STENGER  
Mrs. Ralph Ebbert

FRED L. STEPHENS  
Mr. & Mrs. R. Ed Blackburn, Jr.

HARRY H. STEPHENSON  
Mrs. Emilie F. Stephenson

HENRY STEVENS  
Mr. & Mrs. U. S. Chapman

HARRY STEVENSON  
Mrs. Leonard F. Olt

DAVID A. STEWART  
George E. Stewart

DOUGLAS G. STEWART  
Mr. & Mrs. R. A. Craig

WADE H. STIDHAM  
Mr. J. L. Cone, Jr.  
Mr. W. R. Gooch  
Mr. & Mrs. Scott Linder

RAYMOND STIENER  
Mr. & Mrs. Alex Rotella

FLOYD STINEBAUGH  
Mr. & Mrs. John E. Carroll  
Mr. & Mrs. Fred N. Littlefield

PEGGY STOCK  
Mr. & Mrs. C. C. Crump

JOHN STOKES  
Mrs. Grace W. Stone

STELLA M. STOKES  
Mr. Ralph C. Stokes

FRITHJOF S. STONE  
Ms. Mildred E. Stone

THOMAS B. STONE  
Mrs. Jessie L. Stone

PHILIPP L. STORK  
Mrs. Anna M. Stork

WILLIAM E. STOTZ  
Mr. & Mrs. William N. Stotz

JOHN W. STRANGE  
Ken, Vic, Mary & Seburn Baker

ANNE STRATTON  
Ms. Marjorie Edmunds

GEORGE STRATTON  
Mrs. Marie Stratton  
Shamrock Heights Homeowners  
Association  
Mrs. Mimi Dee

J. ALLAN STREETER  
Mrs. Clara Mae Streeter

HARRY W. STREMBEL  
Mrs. Harry W. Strembel

DICK STRICKLAND  
Mr. & Mrs. Fred M. Taylor  
Founders Life Assurance Co.  
Mr. & Mrs. Michael Petryszak &  
Children  
Mr. & Mrs. Frantz E. Johnson, Jr.

LEE C. STRICKLAND  
Mr. & Mrs. Frank Naegel

ODELL STRICKLAND  
Mr. & Mrs. Myron Johnson

R. G. STROMBOULIS  
Mrs. Maria Stromboulis

THEODORE STRONG  
Mr. & Mrs. Philip K. Strong

BEN STROSHER  
Mr. & Mrs. Sherwood Brown

HIX & JULIA STUART  
Mr. & Mrs. Bonifacio Ramos

MRS. J. K. STUART  
Mr. & Mrs. Wallace Storey

JAMES G. STUART  
Mr. & Mrs. Lansing S. Wetmore

REECE STUART  
Mr. & Mrs. F. M. Bewsher

EUGENE L. SULLIVAN  
Miss Alice C. Sullivan

MRS. EVELYN SUMNER  
Mrs. Ed Blackburn, Sr.  
Mr. & Mrs. Ed Blackburn, Jr.

HARVEY REGINALD SUMNER, III  
Mr. & Mrs. W. N. Purcell  
Mr. & Mrs. J. B. Starkey  
Mr. & Mrs. W. L. Sleeper

TED SUSKEWICZ  
Mr. & Mrs. Alex Rotella

MAJOR GEN. J. R. SUTHERLAND  
Mr. & Mrs. Carl Dauksch

MR. & MRS. H. W. SUTPHEN  
Mr. & Mrs. H. L. Sutphen

TOM SWANN  
Mr. N. E. "Bill" Miller  
Mrs. Byron Bushnell  
Mr. William J. Braley  
Polk County Fertilizer Company

MRS. LAWRENCE SWANSON  
Mr. & Mrs. Wilbur Olson

MRS. BETTIE C. SWIGER  
Mr. & Mrs. Wallace Storey

**T**

DR. DEAN O. TAGGART  
Mr. & Mrs. Robert W. Hornthrop

GEORGE TALBOT, JR.  
Mr. & Mrs. Bud Merritt

K. G. TALKINGTON  
Mrs. K. G. Talkington

J. LINDEN TAPPAN  
Maude M. Fleming

BEATRIS TARCIA  
Mr. & Mrs. H. L. Copps

PAT TARONE  
Dr. Jerry W. Blackmer

JOHN A. TASCHE, M. D.  
Mrs. Myra H. Tasche

JAMES ALTON TATUM  
Miss Mariceva Thompson  
Mr. & Mrs. Mac Hansard

ALBERT TAVOLIER  
Mr. E. G. Hammock

EUGENE STAPLES TAYLOR  
Mrs. Eugene S. Taylor

HUGH V. TAYLOR  
Mr. & Mrs. Walter Freeze

J. M. TAYLOR  
Mr. & Mrs. L. M. May

LEONA TAYLOR  
Sheriff & Mrs. Joe Sheppard

MRS. MARY TAYLOR  
Mildred & Rhea Johnson, Jr.

MAUDE TAYLOR  
Mrs. Byron Bushnell

WILLIAM O. TAYLOR  
Mrs. William O. Taylor

MYRTLE E. TEDESCO  
Mr. Andy Tedesco

PAUL TEICHMANN  
Mr. & Mrs. William Bain

MRS. AVERY TERK  
Mr. & Mrs. Glen S. Peters

ANNETTE H. TETI  
Mr. & Mrs. A. Rotella

ARMAND J. THIEBLOT  
Mr. & Mrs. J. Earl Steinhauer

MRS. CATHERINE V. THOMPSON  
Mr. & Mrs. A. G. Stefurak

HENRY S. THOMPSON  
Mrs. Marjorie M. Hoh

MRS. MARY A. THOMPSON  
Mr. & Mrs. Don Yeats

MILDRED THOMPSON  
Florida State Firemen's Aux-  
iliary

PAUL THOMPSON  
Mr. & Mrs. Don Howell

RICHARD B. THOMPSON  
Mr. & Mrs. Walter J. Stefanski

MR. & MRS. WILLIAM D.  
THOMPSON  
Mr. & Mrs. Leslie S. McCullough

MR. & MRS. WILLIAM L.  
THORNTON  
Ms. Frances Hansen

ESTHER L. THORWALD  
Mr. Thomas Thorwald

MRS. VELMA S. TICE  
Mr. J. Raymond Tice

STANLEY TICHY  
Mrs. Jean Tichy

CHARLES H. TIERNEY  
Mrs. Margaret J. Tierney  
Mr. Joseph Volpe

MRS. INA TILLEY  
Mr. Millard F. Tilley

BENJAMIN G. TIMMONS  
Mr. & Mrs. David H. Carter, Jr.  
Mr. & Mrs. L. D. Thomas

WILLIAM TOBIN  
Col. P. R. Colmer

MRS. RUTH McINNIS TODD  
Mrs. Mary Lou McInnis Joyce

MRS. LAMAR TOMPKINS  
Mrs. Helen H. Oldham

MRS. RUTH TOPPING  
Miss Kay Bourguignon

JACK TOWNLEY  
Mr. & Mrs. Fred B. Sebring

EMMA TRANTHAM  
Mrs. Joe Spangler

MAURICE TRAUET  
Mr. & Mrs. Robert W. Olsen  
Mrs. Bert Scales

MRS. MINNIE B. TREIMAN  
Dr. & Mrs. Chan Springstead

RAY L. TRIPLETT  
Mr. Herbert W. Clough  
Mr. & Mrs. R. G. Floss

VICTOR E. TRISTRAM  
York Division, Borg-Warner

MILLY TROTTER  
Daphne M. Anderson  
Louise McMullen

MERWIN TUBBS  
Mr. & Mrs. Ralph Jenkins

C. AL TUCKER  
Miss Jane E. Grunwell

HORACE L. TUCKER  
Mr. & Mrs. C. E. Adams

MRS. VIVIAN TUCKER  
Mrs. Charlotte L. Mullins &  
Family

EDWARD TURNBULL  
Mrs. M. Lang  
Mrs. W. Lawson  
Mr. & Mrs. James Baird, Jr.

NELLIE RAMAGE TURNER  
Ms. Louise McMullen  
Daphne M. Anderson

LEONARD E. TWENTYMON  
Bernice Twentymon

**U**

UNCLE BILL  
Bob Carr & Fern L. Minter

MRS. BESSIE E. UNDERBERG  
Mr. & Mrs. Willard A. Gortner  
William R. Hough & Co.  
Mary F. Steingarten

MR. & Mrs. John W. Daniels  
Mr. & Mrs. E. T. Piwetz  
Ms. Mary M. Benson  
Mr. C. Kenneth Dickson

EARL UNGERICHT  
Mr. & Mrs. H. Ivor Edwards  
Lee County Bank Trust Dept.  
Paul Penoyer  
M. P. Walters

W. H. URBAN  
Mr. & Mrs. Jimmy Brass

**V**

ELMER VALENTINE  
Mrs. Modelle E. Valentine

WALLACE I. VALENTINE  
Mr. & Mrs. P. L. Eide

ULYSSES "CHUCK" VALLES  
Mr. R. S. Pendexter, Jr.

ANNA JOHNSON VANCE  
St. Lucie County Sheriff's Dept.

ELBERT R. VANCE  
Col. & Mrs. Chester H. Draper

EUGENE D. VANDUYNE  
Mrs. E. D. VanDuyne, Family  
& Friends

MEDLEY VANN  
Mr. John F. Davis

H. R. VAN SICKLE  
Mrs. H. R. Van Sickle

WILLIAM E. VAN SISE II  
Mr. & Mrs. Charles W. Van Sise

REV. CHARLES VAN TASSEL  
Mr. Ronald J. Erhard

D. VARNER  
Col. S. John Folks

MICHAEL VASILER  
Mrs. Dolores M. Vasiler

LAURA VASSIE  
Florida State Firemen's Aux-  
iliary  
Mr. & Mrs. Sam Heisler

PARKER T. VAUSE  
Mr. Walter Culley, Sr.  
Mr. & Mrs. William P. Vause

MARGARET & LINCOLN  
VEHMEYER  
Mr. H. Lincoln Vehmeyer, Jr.  
Mr. & Mrs. Wafer Page

CLARK VELSOR  
Manning Fire Dept., Manning,  
S. C.

ISAAC VERTANESIAN  
Mrs. Naomi W. Vertanesian

EDWARD VINSON  
Mrs. Thomas McGiffin

JOHN VITALE  
Mr. W. R. Ward, Jr.  
E. L. "JACK" VOGEL  
Mrs. Lois I. Vogel

**W**

LESLIE WADSWORTH  
Mr. E. L. Metheny

MRS. ROBERTA C. WADSWORTH  
Jerry W. Blackmer, D.D.S.

MRS. LOUISE WAGNER  
Fred & Barbara Wagner

MRS. A. A. WAKEFORD  
Officers & Directors of the  
William Amer Co.  
Mrs. O. H. Anderson  
Edgewater Drive Association  
Miss Louise M. Keppie  
Mr. Harry J. Kohout  
Newman Leather Corporation

MRS. ELLEN WALKER  
Roy & Ann Gilbert, Terri &  
Robert

MARGARET WALKER  
Ms. Dorothy N. Myers

NELL WALKER  
Mr. & Mrs. H. L. Crutchfield

HAROLD W. WALL  
Mrs. Harold W. Wall

W. R. WALLACE  
Mrs. W. R. Wallace

IN MEMORY OF THE PARENTS  
OF:  
Mr. & Mrs. Aubrey L. Walter

CHARLES K. WALTER  
Mrs. Leonard F. Olt

MRS. PAULINE E. WALTER  
Mr. K. A. Walter

MR. WESLEY WALTERS  
Mr. & Mrs. George M. McGinnis

EMMA WALTERSDORF  
Mr. & Mrs. Joseph E. Fearnis

E. B. WALTON, SR.  
Mr. Phil D. O'Connell, Jr.

MRS. HARRY WANSKER  
Mrs. Gretchen V. Olsen

ARTHUR WARCHOL  
Mr. Stanley Przyborowski

MRS. ALICE WARD  
Dorothy H. Clark

MRS. HAROLD WARD  
Mr. & Mrs. Irving Berger

WALTER WARD  
The David Schneiders  
Mrs. Linda S. Thomas

WILLIAM M. WARD  
Mr. & Mrs. Arnold C. Wass

EDGAR P. WARDNER  
Mrs. Ruth Metts Wardner

BENJAMIN F. WARNELL  
Mr. Herbert F. Frieman

JOHN W. WARREN  
Mr. & Mrs. J. Earl Steinhauer

MANLEY WASHINGTON  
Mr. Harry J. Holt

MRS. VIOLET WAY  
Mr. Floyd L. Hess

HENRY WEATHERS  
Mr. James Houghton

DALE WEAVER  
Mr. & Mrs. Robert Horton

C. N. WEBER  
Mr. & Mrs. Fred Schmieder &  
Family

FRANK D. WEBER  
Mrs. Myrtle E. Weber

FREDERICK J. WEBER  
Mrs. Myrtle E. Weber

KARL A. WEBER  
Mr. & Mrs. Sydney K. Potter

MRS. HELEN B. WECKLEIN  
Mrs. Evelyn M. Corben

L. A. WEEKLEY, JR.  
Mr. & Mrs. Charles Perry

DOROTHY WEIL  
Dr. & Mrs. Edward V. Pollard

FREDERICK A. WEILER  
Sarah V. Weiler

MRS. NANON WEINSCHENK  
Mr. Russell F. Bigler  
Heather Hill Club  
Mrs. Ethel Hollwedel  
Mr. & Mrs. Frank G. Lanekau

Mrs. Christine Brieger  
Mrs. Vera Wehmeyer

CHRIS & JUDY WEISS  
Mr. & Mrs. Leslie C. Weiss

MR. & MRS. R. A. WELLMAN  
Mr. W. B. Wellman

A. C. WERMUTH  
Mr. Peter S. Huber

MRS. RUTH WESLEY  
Mr. & Mrs. T. O. Adams

G. A. WEST  
Mrs. G. A. West

JOSEPH A. WEST  
Mrs. J. A. West

CURTIS WESTBROOK, SR.  
Mr. & Mrs. Robert Bissell

FRANK CHARLES WESTENDICK  
Mr. & Mrs. Herbert W. Braun  
Mr. Walter Culley, Sr.

ARTHUR WESTERVELT  
Mrs. Anne Johnson

RAYMOND WESTON  
Mrs. Raymond Weston

WILMER H. WHALEY, SR  
Mrs. Harold F. Miller

MRS. RUTH E. WHATLEY  
Dr. & Mrs. Thomas K. Blain  
Mr. & Mrs. John B. Ritch  
Bronson's, Inc.  
Mrs. Nellie B. Hall  
Dr. & Mrs. Donald Brown  
Mr. & Mrs. Murray W.

Overstreet, Jr.  
Mr. & Mrs. F. N. Littlefield

Mrs. Lawrence Rogers  
Mr. & Mrs. Carl Spence  
Mr. & Mrs. W. J. Ziegler  
Dr. & Mrs. J. Z. Schmidt

OTIS WHEATON  
Mr. & Mrs. Bill Becker

VIVIAN WHEELER  
Dr. & Mrs. J. Z. Schmidt

HARRY WHEWELL  
Harry E. & Genevieve Whewell

MRS. H. P. WHIDDEN  
Mr. & Mrs. Wallace Storey

DR. BAKER WHISNANT  
Mr. Alfred G. Hamann

DR. CLEVELAND J. WHITE  
Dr. & Mrs. Frank H. Fowler

GEORGE WHITE  
Mrs. Warren Baird

WALTER WHITEHEAD  
Mr. & Mrs. Dick Rathjen

GRIERSON JOHN WHITESIDE  
Mr. & Mrs. Donald H. Whiteside

BOB WHITNEY  
Mr. & Mrs. Scott Linder

CARL P. WHITNEY  
Mrs. Carl P. Whitney

MRS. IRENE WHITTAKER  
Ms. Mary R. Altman  
Friends & Neighbors of Charlotte  
Shores

MRS. EMALOU G. WHITTMER  
Mrs. Edna B. Chapin

WILLIAM C. WIEKING  
Mrs. Eva Wiekling

REV. GILBERT W. WIETING  
Mrs. Katherine P. Wieting

FRANK WIGGINS  
Mr. Raymond Camp, Jr.  
Mr. & Mrs. Myron Johnson

WILLIAM WILKINSON  
Mrs. Samuel Wilson Greenland

A. B. WILLIAMS  
Mrs. Azel P. Barney

LT. CHARLES E. WILLIAMS  
Mrs. Charles E. Williams

CHARLES L. WILLIAMS  
Mrs. Marion Sullivan

ELIZABETH COBB WILLIAMS  
Marvin M. Everett, Jr. Family

GEORGE H. WILLIAMS  
Ms. Edna Freedlund  
Mr. & Mrs. R. H. Fultz

Mr. & Mrs. Murray Morphet  
Ms. Betty J. Richey  
Ms. Rose B. Stevens

HAZEL L. WILLIAMS  
Mr. & Mrs. Kirby Lane

MRS. JOANIE WILLIAMS  
Mrs. Lillian T. Cox

PHILIP B. WILLIAMS  
Mr. & Mrs. Harold Parks

## About your will.....

Many generous friends have thoughtfully made provision in their wills for our youngsters. If you are considering a gift of this nature, we can furnish information to assist you in drawing up a new will or revising an old one. Through a bequest to the Florida Sheriffs Youth Fund, Inc., you can help youngsters at any or all of our facilities, as you choose. Simply fill out the form below and mail it in the postage-paid envelope found elsewhere in this issue or call Area Code 904-842-5501 for further information.

Address inquiries to:

Harry K. Weaver, President  
Florida Sheriffs Youth Fund, Inc.  
Boys Ranch, Florida 32060

Please send literature about:

- [ ] Wills  
[ ] Effective Giving  
[ ] Giving Stocks  
[ ] Giving through life insurance

Name \_\_\_\_\_

Address \_\_\_\_\_

City \_\_\_\_\_

State \_\_\_\_\_ Zip \_\_\_\_\_

The proper designation of legatee is as follows:

FLORIDA SHERIFFS YOUTH FUND, INC.



SARAH WILLIAMS  
Mr. James E. Williams

SHAWN WILLIAMS  
Mr. & Mrs. Spencer A. Knutson

MRS. AIDA M. WILLIAMSON  
Mr. Frederic A. Williamson

SAMUEL E. WILLIAMSON  
Mrs. Alice M. Williamson

BILL WILLITS  
Mr. & Mrs. Ray E. Green, Sr.  
Mrs. Lucille Leslie

DONALD WILLY  
Mrs. Raymond O. Boyd  
Mr. & Mrs. J. J. Lucal

E. MEADE WILSON  
Mr. Burton E. Hewett  
Mr. & Mrs. Carl J. Jackson  
Wallace & Pat Storey  
Mr. & Mrs. Lewis Yancey

EARLE WILSON  
Mr. & Mrs. James E. Caulford

ELSIE WILSON  
Mr. & Mrs. John D. McColl

GARY WILSON  
Mr. & Mrs. Wallace Storey

HARRY W. WILSON  
Mr. & Mrs. Henry C. Scott

MRS. ROSE WILSON  
Mrs. Paul Hirni

EUGENE A. WIMBERLY  
Mrs. D. E. Beckett

MRS. SARAH M. WINDERWEEDLE  
Mr. & Mrs. Sim L. Lowman & Family

MARTHA C. WINQUIST  
Mr. & Mrs. Douglas Winquist  
Mr. Douglas Winquist, Jr.

SIGNE C. WIRTICK  
Mr. Walter J. Wirtick

MILTON WISEMAN  
Jean M. Long

DAVE WITHNELL  
Mr. & Mrs. R. A. Peterson

FREDERICK C. WOHN  
Mr. & Mrs. R. W. Weitzenfeld

WILLIAM D. WOLFE  
Mr. Ted N. Foskitt

FRANK E. WOLFINGTON  
Mr. & Mrs. Banks Pope

DR. ROLAND WOOD  
Dr. & Mrs. Edward V. Pollard

COURY WOODARD  
Bill & Keightley Stringfellow

J. H. (BUCK) WOODS  
Mr. & Mrs. E. Odell Carlton

ROSA LEE WOOTEN  
Mr. & Mrs. William Sharpe

RAY WORDEN  
Earl G. Christopher  
Mrs. Nellie Worden

ROBERT D. WORTHING  
Employees of Delray Beach  
City Council

GEORGE F. WORTHINGTON  
Mr. & Mrs. Warren J. Frair

STANLEY WRIGHT  
Mr. & Mrs. Bergie L. Kauffman

WAYNE D. WRIGHT  
Virginia Blaesi

ERNEST WURM  
Mrs. Lillian W. Miller

WILLIAM H. YARNOLD  
Mrs. William Harold Yarnold

WYLIE L. YATES  
Mr. & Mrs. Ray Brown

MILTON L. YEATS  
Mr. & Mrs. Victor B. Yeats

ARTHUR W. YODER  
Mrs. Clara S. Robbins

RAY D. YODER  
Mr. & Mrs. John E. Carroll  
Mr. & Mrs. Russell Henderson & Children

MR. & MRS. W. D. YONALLY  
Mr. A. C. Yonally

MISS ANNA M. YOUNG  
Mrs. Margaret W. Ewen & Family

COL. EDWARD R. YOUNG  
Major & Mrs. Richard O. Wilhour

FRED YOUNG  
Employees of Manatee County  
Sheriff's Office

Mr. & Mrs. R. W. Weitzenfeld

VIC YOUNG  
Mrs. H. L. Crutchfield

ALICE YURICK  
Mrs. Leah Muir Frazer

**Z**

EMIL ZABORSKY  
Mrs. Anna K. Zaborsky

EDWARD ZALDIVAR  
Mrs. Mary C. Zaldivar

HENRY G. ZANDER, JR.  
Mr. & Mrs. Roger Billings

RABBI DAVID ZIELONKA  
Dr. Jerry W. Blackmer

MRS. M. V. ZIMMERMAN  
Mrs. Ted DeBrovy

PERCY ZIMMERMAN  
Mr. & Mrs. Jess Yarborough

ELLA ZYDOR  
Mr. Paul Zydor

## Now you can give and receive income

Gift annuities paying up to 12 per cent annually — depending upon your age — are now available from the Florida Sheriffs Youth Fund, Inc. For more information on how to receive a guaranteed income for life and a significant tax deduction, simply complete this coupon and mail it in the convenient, postage-paid envelope found elsewhere in this issue.

Name \_\_\_\_\_

Address \_\_\_\_\_

City \_\_\_\_\_

State \_\_\_\_\_ Zip \_\_\_\_\_

Area Code and Telephone No. \_\_\_\_\_

## Help wanted

If you are getting two copies of this publication, you can help us reduce our printing and mailing costs. Simply send us both labels. (If you don't want to cut up your magazines, just copy down the exact information from each label.) Mail both labels to Circulation, THE RANCHER, Boys Ranch, Florida 32060. Your cooperation will be greatly appreciated.

## NEW ADDRESS?

Americans are on the move, and keeping up with changes of address is a six-aspirin headache. Some of our subscribers (bless them) send us their new addresses. Others let the U. S. Postal Service notify us, and the Postal Service charges us 25 cents for each new address. If you have a new address, please help us to keep our budget in balance by clipping out this form, filling it out and mailing it to:

**Circulation Dept.  
THE RANCHER  
Boys Ranch, Fla. 32060**

Name \_\_\_\_\_

Address \_\_\_\_\_

City \_\_\_\_\_ State \_\_\_\_\_ Zip \_\_\_\_\_

In this space, please attach your RANCHER mailing label with the old address and fill in the new address above. Also do the same with name changes and corrections.



### Few Words Not Enough

Many more words than can be fitted into a photo caption are needed to describe the contributions made by Carl Stauffer (right), recently retired Executive Director of the Florida Sheriffs Association. Although it never carried his name, every issue of THE RANCHER ever printed has been edited by Stauffer. All the promotional and fund raising efforts for the Boys Ranch, Girls Villa and Youth Ranch have had the benefit of his advice and experience. He's been a friend and counselor to former Ranchers. One summer he ran both the Boys Ranch and the Sheriffs Association. It was also Stauffer who first suggested Harry Weaver (left) as the man who could take over and direct the Ranch. Weaver, President of the Florida Sheriffs Youth Fund, said the close cooperation between the Youth Fund and the Association over the years was very much a result of the warm relationship between himself and Stauffer. He also pointed out that Stauffer continues to edit THE RANCHER (with the exception of this caption) as a consultant to the Sheriffs Association.

---

# "That young boy became a man in just a few short seconds"

---

Rancher James Zattiero, 13, was cited for bravery by Florida Sheriffs Youth Fund President Harry Weaver after he rescued a drowning man from the Suwannee River.

The rescue occurred April 1 when James was on a motor-boat cruise with some other Ranchers and his Cottage Parents, Mr. and Mrs. Joe Voss.

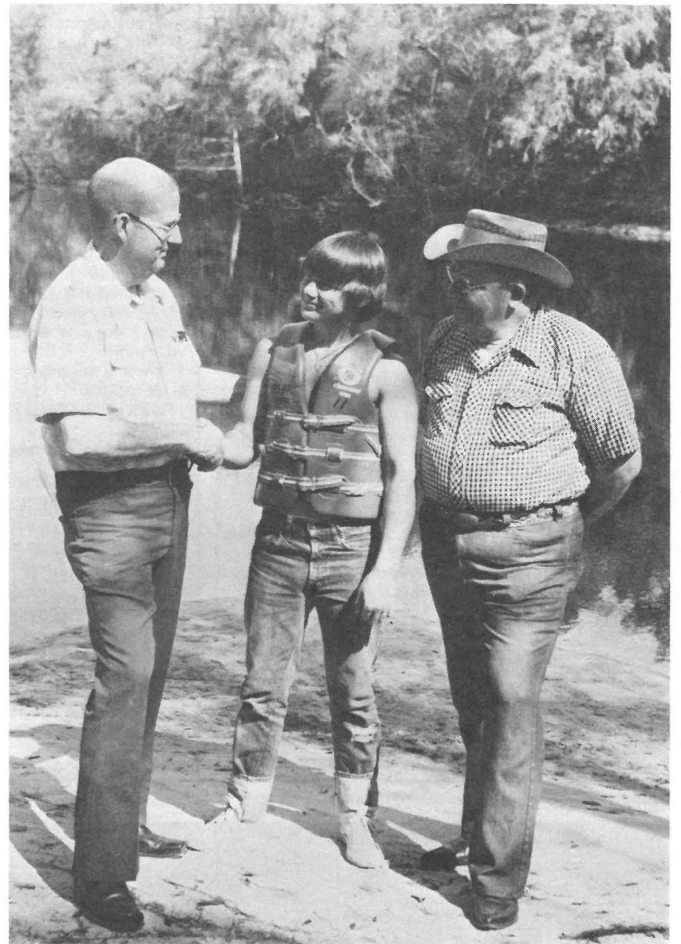
As the Ranchers were traveling upstream, they saw an accident involving two men in a small boat.

One of the men had been standing in the bow of the boat when the other man gunned the motor and both men tumbled into the river. Their boat ran wild, then sank, leaving them struggling in the water without life jackets or any life saving equipment.

One man made it to shore, but the other was obviously in trouble, and the Ranchers turned downstream to try to assist him. Due to the swift current and other conditions, they were not able to get close enough to pull the struggling man out of the water. By this time he was turning blue and his eyes had rolled back in his head.

"Let me go help him, Pop," said James who was in the bow of the Boys Ranch boat and was wearing a life jacket.

Voss knew that James was a strong swimmer with some water rescue training, so he told him to go ahead. When James approached, the drowning man grabbed his life jacket, but James was able to break the man's hold and pulled him to safety.



James Zattiero was commended by Youth Fund President Harry Weaver (left) and Group Parent Joe Voss.

After the two accident victims recovered from their ordeal and had been delivered to their truck, which was parked downstream, the Ranchers returned to the Boys Ranch, where James received a hero's welcome.

Later Joe Voss told one of his Ranch staff associates: "That young boy became a man in just a few short seconds."

---

FLORIDA SHERIFFS  
YOUTH FUND  
BOYS RANCH, FLORIDA 32060  
Address Correction Requested

